

**CITY OF GRAIN VALLEY BOARD OF ALDERMEN  
REGULAR MEETING AGENDA**

**JANUARY 23, 2017**

**7:00 P.M.**

**OPEN TO THE PUBLIC**

LOCATED IN THE COUNCIL CHAMBERS OF CITY HALL  
711 MAIN STREET – GRAIN VALLEY, MISSOURI

---

**ITEM I: CALL TO ORDER**

- Mayor Mike Todd

**ITEM II: ROLL CALL**

- Deputy City Clerk Khalilah Holland

**ITEM III: INVOCATION**

- Wayne Geiger of First Baptist Church of Grain Valley

**ITEM IV: PLEDGE OF ALLEGIANCE**

- Alderman Jeff Coleman

**ITEM V: APPROVAL OF AGENDA**

- City Administrator Ryan Hunt

**ITEM VI: PROCLAMATIONS**

- None

**ITEM VII: CITIZEN PARTICIPATION**

- Citizens are Asked to Please Limit Their Comments to Two (2) Minutes

**ITEM VIII: CONSENT AGENDA**

- January 9, 2017 – Board of Aldermen Regular Meeting Minutes
- January 23, 2017 – Accounts Payable



**ITEM IX: PREVIOUS BUSINESS**

**ITEM IX (A)**      **A Resolution by the Board of Aldermen of the City of Grain Valley, Missouri Authorizing the City Administrator to Enter Into An Agreement with Ron’s Auto & Truck Towing for Towing Services**  
R17-01  
*Introduced by Alderman*

*Chuck Johnston*

To provide towing services on request by the Grain Valley Police Department for the period of January 15, 2017 – January 15, 2019

**ITEM X: NEW BUSINESS**

- None

**ITEM XI: PRESENTATIONS**

- None

**ITEM XII: PUBLIC HEARING**

- None

**ITEM XIII: ORDINANCES**

**ITEM XIII (A)**      **An Ordinance Approving the Final Plat of Old Towne Marketplace 11<sup>th</sup> Plat**  
B17-01

1<sup>ST</sup> READ

*Introduced by Alderman*      To gain final plat approval for Old Towne Marketplace 11<sup>th</sup> Plat

*Dale Arnold*

**ITEM XIV: RESOLUTIONS**

- None

**ITEM XV: CITY ATTORNEY REPORT**

- City Attorney Matt Geary

**ITEM XVI: CITY ADMINISTRATOR & STAFF REPORTS**

- City Administrator Ryan Hunt
- Assistant City Administrator Ken Murphy
- Parks & Recreation Director Shannon Davies
- Community Development Director Rick Arroyo
- Finance Director Cathy Bowden
- Chief of Police David Starbuck
- Deputy City Clerk Khalilah Holland



**ITEM XVII: BOARD OF ALDERMEN REPORTS & COMMENTS**

- Alderman Dale Arnold
- Alderman Jeff Coleman
- Alderman Bob Headley
- Alderman Chuck Johnston
- Alderman Valerie Palecek
- Alderman Yolanda West

**ITEM XVIII: MAYOR REPORT**

- Mayor Mike Todd

**ITEM XIX: EXECUTIVE SESSION**

- Legal Actions, Causes of Action of Litigation Pursuant to Section 610.021(1), RSMo. 1998, as Amended
- Leasing, Purchase or Sale of Real Estate Pursuant to Section 610.021(2), RSMo. 1998, as Amended
- Hiring, Firing, Disciplining or Promoting of Employees (personnel issues), Pursuant to Section 610.021(3), RSMo. 1998, as Amended
- Individually Identifiable Personnel Records, Personnel Records, Performance Ratings or Records Pertaining to Employees or Applicants for Employment, Pursuant to Section 610.021(13), RSMo 1998, as Amended

**ITEM XX: ADJOURNMENT**

**PLEASE NOTE**

THE NEXT SCHEDULED MEETING OF THE CITY OF GRAIN VALLEY BOARD OF ALDERMEN WILL TAKE PLACE FEBRUARY 13, 2017 AS A REGULAR MEETING AT 7:00 P.M. TO BE HELD IN THE COUNCIL CHAMBERS OF GRAIN VALLEY CITY HALL

PERSONS REQUIRING AN ACCOMMODATION TO ATTEND AND PARTICIPATE IN THE MEETING SHOULD CONTACT THE CITY CLERK AT 816.847.6211 AT LEAST 48 HOURS BEFORE THE MEETING

THE CITY OF GRAIN VALLEY IS INTERESTED IN EFFECTIVE COMMUNICATION FOR ALL PERSONS

UPON REQUEST, THE MINUTES FROM THIS MEETING CAN BE MADE AVAILABLE BY CALLING 816.847.6211



INTENTIONALLY LEFT BLANK

*Consent*

*Agenda*

INTENTIONALLY LEFT BLANK



**CITY OF GRAIN VALLEY**  
**BOARD OF ALDERMEN MEETING MINUTES**  
Regular Session

**01/09/2017**  
**PAGE 1 OF 6**

**ITEM I: CALL TO ORDER**

- The Board of Aldermen of the City of Grain Valley, Missouri, met in Regular Session on January 9, 2017 at 7:00 p.m. in the Council Chambers located at Grain Valley City Hall
- The meeting was called to order by Mayor Mike Todd

**ITEM II: ROLL CALL**

- Deputy City Clerk Khalilah Holland called roll
- *Present: Palecek, Arnold, Headley, West, Johnston*
- *Absent: Coleman*

**-QUORUM PRESENT-**

**ITEM III: INVOCATION**

- Invocation was given by Darryl Jones of Crossroads Church

**ITEM IV: PLEDGE OF ALLEGIANCE**

- The Pledge of Allegiance was led by Alderman Dale Arnold

**ITEM V: APPROVAL OF AGENDA**

- No Changes

**ITEM VI: PROCLAMATIONS**

- Mayor Todd presented Reid Atkinson and the Grain Valley High School Marching Eagles band members with a proclamation for representing the State of Missouri in the 2016 Macy's Thanksgiving Day Parade in New York and being invited to revive a 60 year old tradition by marching through the Today Show studios

**ITEM VII: CITIZEN PARTICIPATION**

- Penny Kruse 410 SW Hamilton Ln – Thanked the City for their help with the 2016 Senior Basket program

**ITEM VIII: CONSENT AGENDA**

- October 26, 2016 Board of Zoning Adjustment Meeting Minutes
- November 15, 2016 Park Board Meeting Minutes
- December 2016 – Court Report
- December 12, 2016 – Board of Aldermen Regular Meeting Minutes
- January 9, 2017 – Accounts Payable

---

**ELECTED OFFICIALS PRESENT**  
Mayor Mike Todd  
Alderman Dale Arnold  
Alderman Bob Headley  
Alderman Chuck Johnston  
Alderman Valerie Palecek  
Alderman Yolanda West

**ELECTED OFFICIALS ABSENT**  
Alderman Jeff Coleman

**STAFF OFFICIALS PRESENT**  
City Attorney Matt Geary  
City Administrator Ryan Hunt  
Assistant City Administrator Ken Murphy  
Deputy City Clerk Khalilah Holland  
Community Development Director Rick Arroyo  
Chief of Police David Starbuck  
Parks & Recreation Director Shannon Davies



**CITY OF GRAIN VALLEY**  
**BOARD OF ALDERMEN MEETING MINUTES**  
 Regular Session

**01/09/2017**  
**PAGE 2 OF 6**

- *Alderman West made a Motion to Approve Consent Agenda*
- *The Motion was Seconded by Alderman Headley*
  - No Discussion
- *Motion to Approve Consent Agenda was voted on with the following voice vote:*
  - *Aye: Palecek, Arnold, Headley, West, Johnston*
  - *Nay: None*
  - *Abstain: None*

**-MOTION APPROVED: 5-0-**

**ITEM IX: PREVIOUS BUSINESS**

- None

**ITEM X: NEW BUSINESS**

- None

**ITEM XI: PRESENTATION**

- None

**ITEM XII: ORDINANCES**

- None

**ITEM XIII: RESOLUTIONS**

**Resolution No. R17-01:** A Resolution by the Board of Aldermen of the City of Grain Valley, Missouri Authorizing the City Administrator to Enter Into An Agreement with Ron’s Auto & Truck Towing for Towing Services

- City Attorney Matt Geary read **Resolution No. R17-01** by title only
- *Alderman Johnston moved to accept Resolution No. R17-01 as read*
- *The Motion was Seconded by Alderman West*
  - Current towing contract has expired; Staff requested proposals for towing services.
  - Chief Starbuck received three responses to the proposal request; the responses were reviewed and scored; Ron’s Auto & Truck Towing was recommended by Staff for approval
  - Bill Pearce owner of Kustom Cruzers was present at the meeting and was opposed to the City’s tow lot being relocated to Oak Grove
  - Alderman Johnston was disappointed all the responses to the towing contract request were not included with the resolution

**ELECTED OFFICIALS PRESENT**  
 Mayor Mike Todd  
 Alderman Dale Arnold  
 Alderman Bob Headley  
 Alderman Chuck Johnston  
 Alderman Valerie Palecek  
 Alderman Yolanda West

**ELECTED OFFICIALS ABSENT**  
 Alderman Jeff Coleman

**STAFF OFFICIALS PRESENT**  
 City Attorney Matt Geary  
 City Administrator Ryan Hunt  
 Assistant City Administrator Ken Murphy  
 Deputy City Clerk Khalilah Holland  
 Community Development Director Rick Arroyo  
 Chief of Police David Starbuck  
 Parks & Recreation Director Shannon Davies





**CITY OF GRAIN VALLEY**  
**BOARD OF ALDERMEN MEETING MINUTES**  
 Regular Session

**01/09/2017**  
**PAGE 3 OF 6**

- Mayor Todd requested Staff to review the towing services contract with Ron's Auto & Truck Towing to allow for the tow lot to remain in Grain Valley
- *Alderman Headley made a Motion to Table Resolution R17-01*
- *The Motion was Seconded by Alderman Johnston*
  - No Discussion
- *Motion to Table Resolution R17-01 was voted on with the following voice vote:*
  - *Aye: Palecek, Arnold, Headley, West, Johnston*
  - *Nay: None*
  - *Abstain: None*

**-RESOLUTION TABLED: 5-0-**

**Resolution No. R17-02:** A Resolution by the Board of Aldermen of the City of Grain Valley Authorizing the City Administrator to Enter Into An Agreement with Dude Solutions, Inc for Asset Management Software

- City Attorney Matt Geary read **Resolution No. R17-02** by title only
- *Alderman Headley moved to accept Resolution No. R17-02 as read*
- *The Motion was Seconded by Alderman West*
  - The City's current asset management company has discontinued its existing software; the new version is considerably more expensive
  - Staff members have looked at other options over the last year and have sat through multiple demonstrations to determine what will work best for the City's needs
  - Staff looked at proposals from Cartegraph, Beehive and Dude Solutions and Dude Solutions is the least expensive option; it is also the best fit for the City; the program is much more user friendly than what the City currently uses and will allow the City to do more than what we can currently
  - The asset management software companies are web based nationwide service providers; there are no local companies providing this type of asset management service
- *Resolution No. R17-02 was voted upon with the following voice vote:*
  - *Aye: Arnold, Headley, Johnston, Palecek, West*
  - *Nay: None*
  - *Abstain: None*

**-RESOLUTION NO. R17-02 APPROVED: 5-0-**

**ELECTED OFFICIALS PRESENT**  
 Mayor Mike Todd  
 Alderman Dale Arnold  
 Alderman Bob Headley  
 Alderman Chuck Johnston  
 Alderman Valerie Palecek  
 Alderman Yolanda West

**ELECTED OFFICIALS ABSENT**  
 Alderman Jeff Coleman

**STAFF OFFICIALS PRESENT**  
 City Attorney Matt Geary  
 City Administrator Ryan Hunt  
 Assistant City Administrator Ken Murphy  
 Deputy City Clerk Khalilah Holland  
 Community Development Director Rick Arroyo  
 Chief of Police David Starbuck  
 Parks & Recreation Director Shannon Davies



**CITY OF GRAIN VALLEY**  
**BOARD OF ALDERMEN MEETING MINUTES**  
Regular Session

**01/09/2017**  
**PAGE 4 OF 6**

**ITEM XIV: CITY ATTORNEY REPORT**

- None

**ITEM XV: CITY ADMINISTRATOR & STAFF REPORTS**

- City Administrator Ryan Hunt
  - None
- Community Development Director Ken Murphy
  - None
- Finance Director Cathy Bowden
  - None
- Deputy City Clerk
  - Election filing will be open through January 17, 2017 for the April 4, 2017 General Municipal Election
- Parks & Recreation Director Shannon Davies
  - Announced the City was awarded \$119,210 in 2020 Missouri Transportation Alternatives Program (TAP) funds for the Blue Branch Creek – Pedestrian Bridge project through MARC's Active Transportation Programming Committee
- Chief of Police David Starbuck
  - Introduced the new Animal Control Officer, Jacqueline Sparks

**ITEM XVI: BOARD OF ALDERMEN REPORTS & COMMENTS**

- Alderman Dale Arnold
  - None
- Alderman Jeff Coleman
  - None
- Alderman Bob Headley
  - None
- Alderman Chuck Johnston
  - Asked Staff about the status of the City View; Requested staff to restore the damaged yards of the homes at the corner of SW Eagles Pkwy and Sni-A-Bar during the January 5<sup>th</sup> snow plowing event
- Alderman Valerie Palecek
  - None
- Alderman Yolanda West
  - None

---

**ELECTED OFFICIALS PRESENT**  
Mayor Mike Todd  
Alderman Dale Arnold  
Alderman Bob Headley  
Alderman Chuck Johnston  
Alderman Valerie Palecek  
Alderman Yolanda West

**ELECTED OFFICIALS ABSENT**  
Alderman Jeff Coleman

**STAFF OFFICIALS PRESENT**  
City Attorney Matt Geary  
City Administrator Ryan Hunt  
Assistant City Administrator Ken Murphy  
Deputy City Clerk Khalilah Holland  
Community Development Director Rick Arroyo  
Chief of Police David Starbuck  
Parks & Recreation Director Shannon Davies



**CITY OF GRAIN VALLEY**  
**BOARD OF ALDERMEN MEETING MINUTES**  
Regular Session

**01/09/2017**  
**PAGE 5 OF 6**

**ITEM XVII: MAYOR REPORT**

- Mayor Mike Todd
  - None

**ITEM XIII: EXECUTIVE SESSION**

- Mayor Todd stated a need to hold an Executive Session for Legal Actions, Causes of Action of Litigation Pursuant to Section 610.021(1), RSMo. 1998, as Amended; Hiring, Firing, Disciplining or Promoting of Employees (personnel issues), Pursuant to Section 610.021(3)
- *Alderman West moved to close the Regular Meeting for items related to Section 610.021(1), 610.021(3), RSMo 1998, As Amended*
- *The motion was seconded by Alderman Arnold*
  - No Discussion
- *The motion was voted on with the following roll call vote:*
  - *Aye: Arnold, Headley, Johnston, Palecek, West*
  - *Nay: None*
  - *Abstain: None*

**-MOTION CARRIED: 5-0-**

**-THE REGULAR MEETING CLOSED AT 7:33 PM**

- *Alderman Johnston moved to open the Regular Meeting*
- *The motion was seconded by Alderman West*
  - No Discussion
- *The motion was voted on with the following roll call vote:*
  - *Aye: Arnold, Headley, Johnston, Palecek, West*
  - *Nay: None*
  - *Abstain: None*

**-MOTION CARRIED: 5-0-**

**-THE REGULAR MEETING OPENED AT 8:10 PM**

**ITEM XIX: ADJOURNMENT**

- The meeting adjourned at 8:10 p.m.

**ELECTED OFFICIALS PRESENT**

Mayor Mike Todd  
Alderman Dale Arnold  
Alderman Bob Headley  
Alderman Chuck Johnston  
Alderman Valerie Palecek  
Alderman Yolanda West

**ELECTED OFFICIALS ABSENT**

Alderman Jeff Coleman

**STAFF OFFICIALS PRESENT**

City Attorney Matt Geary  
City Administrator Ryan Hunt  
Assistant City Administrator Ken Murphy  
Deputy City Clerk Khalilah Holland  
Community Development Director Rick Arroyo  
Chief of Police David Starbuck  
Parks & Recreation Director Shannon Davies



**CITY OF GRAIN VALLEY**  
**BOARD OF ALDERMEN MEETING MINUTES**  
 Regular Session

**01/09/2017**  
**PAGE 6 OF 6**

Minutes submitted by:

\_\_\_\_\_  
 Khalilah Holland  
*Deputy City Clerk*

\_\_\_\_\_  
 Date

Minutes approved by:

\_\_\_\_\_  
 Mike Todd  
*Mayor*

\_\_\_\_\_  
 Date

DRAFT

**ELECTED OFFICIALS PRESENT**  
 Mayor Mike Todd  
 Alderman Dale Arnold  
 Alderman Bob Headley  
 Alderman Chuck Johnston  
 Alderman Valerie Palecek  
 Alderman Yolanda West

**ELECTED OFFICIALS ABSENT**  
 Alderman Jeff Coleman

**STAFF OFFICIALS PRESENT**  
 City Attorney Matt Geary  
 City Administrator Ryan Hunt  
 Assistant City Administrator Ken Murphy  
 Deputy City Clerk Khalilah Holland  
 Community Development Director Rick Arroyo  
 Chief of Police David Starbuck  
 Parks & Recreation Director Shannon Davies

DEPARTMENT	FUND	VENDOR NAME	DESCRIPTION	AMOUNT_				
NON-DEPARTMENTAL	GENERAL FUND	MO DEPT OF REVENUE	MISSOURI WITHHOLDING	2,155.61				
			MISSOURI WITHHOLDING	162.26				
			FAMILY SUPPORT PAYMENT CENTER	VANDER LINDEN CASE 6079233	171.69			
				VANDER LINDEN CASE 6079233	12.93			
			UMB BANK-HSA	HSA - GRAIN VALLEY, MO	805.11			
				HSA - GRAIN VALLEY, MO	60.60			
			CITY OF GRAIN VALLEY -FLEX	FLEX - DEPENDENT CARE	97.84			
				FLEX - DEPENDENT CARE	7.37			
				FLEX PLAN	122.06			
				FLEX PLAN	9.19			
			ICMA RC	ICMA 457 %	302.48			
				ICMA 457 %	22.77			
				ICMA 457	342.25			
				ICMA 457	25.77			
			INTERNAL REVENUE SERVICE	FEDERAL WH	5,706.66			
				FEDERAL WH	429.54			
				SOCIAL SECURITY	3,420.97			
				SOCIAL SECURITY	257.50			
				MEDICARE	800.06			
				MEDICARE	60.22_			
				TOTAL:	14,972.88			
			INFORMATION TECH	GENERAL FUND	NETSTANDARD INC	JAN MONTHLY IT SERVICES	1,217.61	
						UMB BANK-HSA	HSA - GRAIN VALLEY, MO	1.12
							HSA - GRAIN VALLEY, MO	0.09
						VERIZON WIRELESS	CELLULAR SERVICES 12/19- 0	160.04
							CELLULAR SERVICES 12/19- 0	40.01
						INTERNAL REVENUE SERVICE	SOCIAL SECURITY	2.24
	SOCIAL SECURITY	0.17						
	MEDICARE	0.52						
	MEDICARE	0.04_						
	TOTAL:	1,421.84						
BLDG & GRDS	GENERAL FUND	UMB BANK-HSA				HSA - GRAIN VALLEY, MO	23.25	
						HSA - GRAIN VALLEY, MO	1.75	
			STANDARD INSURANCE CO	JAN 2017 STANDARD INSURANC	6.00			
			GENERAL ELEVATOR	JAN MONTHLY ELEVATOR SERV	93.80			
			INTERNAL REVENUE SERVICE	SOCIAL SECURITY	34.73			
				SOCIAL SECURITY	2.62			
				MEDICARE	8.12			
				MEDICARE	0.62_			
				TOTAL:	170.89			
			ADMINISTRATION	GENERAL FUND	BLUE CROSS BLUE SHIELD OF KC	BARTON	409.92	
RICOH USA INC	MAILROOM C85075881	59.65						
	ADMIN C85075927	32.87						
STEWART TITLE COMPANY	TITLE FEES	589.50						
UMB BANK-HSA	HSA - GRAIN VALLEY, MO	58.56						
	HSA - GRAIN VALLEY, MO	4.41						
STANDARD INSURANCE CO	JAN 2017 STANDARD INSURANC	21.00						
RICOH USA INC	MAILROOM C85075881	262.94						
	ADMIN C85075927	211.25						
ICMA RC	EMPLOYEE DEDUCTIONS	93.02						
	EMPLOYEE DEDUCTIONS	7.01						
INTERNAL REVENUE SERVICE	SOCIAL SECURITY	226.02						
	SOCIAL SECURITY	17.02						

DEPARTMENT	FUND	VENDOR NAME	DESCRIPTION	AMOUNT_
			MEDICARE	52.85
			MEDICARE	3.98_
			TOTAL:	2,050.00
FINANCE	GENERAL FUND	MO DEPT OF REVENUE	MISSOURI WITHHOLDING	0.50
		UMB BANK-HSA	HSA - GRAIN VALLEY, MO	46.79
			HSA - GRAIN VALLEY, MO	3.53
		STANDARD INSURANCE CO	JAN 2017 STANDARD INSURANC	12.00
		INTERNAL REVENUE SERVICE	SOCIAL SECURITY	125.80
			SOCIAL SECURITY	9.47
			MEDICARE	29.41
			MEDICARE	2.22_
			TOTAL:	229.72
COURT	GENERAL FUND	JOHN R JACK	JAN 2017 JUDICIAL FEES	600.00
		UMB BANK-HSA	HSA - GRAIN VALLEY, MO	46.50
			HSA - GRAIN VALLEY, MO	3.50
		STANDARD INSURANCE CO	JAN 2017 STANDARD INSURANC	12.00
		INTERNAL REVENUE SERVICE	SOCIAL SECURITY	99.73
			SOCIAL SECURITY	7.51
			MEDICARE	23.32
			MEDICARE	1.76_
			TOTAL:	794.32
VICTIM SERVICES	GENERAL FUND	UMB BANK-HSA	HSA - GRAIN VALLEY, MO	46.50
			HSA - GRAIN VALLEY, MO	3.50
		STANDARD INSURANCE CO	JAN 2017 STANDARD INSURANC	12.00
		VERIZON WIRELESS	CELLULAR SERVICES 12/19- 0	51.65
		INTERNAL REVENUE SERVICE	SOCIAL SECURITY	119.86
			SOCIAL SECURITY	9.03
			MEDICARE	28.03
			MEDICARE	2.11_
			TOTAL:	272.68
FLEET	GENERAL FUND	UMB BANK-HSA	HSA - GRAIN VALLEY, MO	43.09
			HSA - GRAIN VALLEY, MO	3.25
		STANDARD INSURANCE CO	JAN 2017 STANDARD INSURANC	6.00
		INTERNAL REVENUE SERVICE	SOCIAL SECURITY	87.64
			SOCIAL SECURITY	6.60
			MEDICARE	20.49
			MEDICARE	1.55_
			TOTAL:	168.62
POLICE	GENERAL FUND	BLUE CROSS BLUE SHIELD OF KC	ROUNDING	0.16
		RICOH USA INC	PD C85075912	98.75
			PD C85075921	9.10
			PD DOWN C85075930	53.76
		STATE BANK OF MISSOURI	2017 PYMNT FOR COBAN UNIT	1,831.69
			VEHICLE PAYMENT	450.76
			VEHICLE PAYMENT	18,030.47
		UMB BANK-HSA	HSA - GRAIN VALLEY, MO	837.00
			HSA - GRAIN VALLEY, MO	63.00
		STANDARD INSURANCE CO	JAN 2017 STANDARD INSURANC	288.00
		DELTA DENTAL OF MO LOCKBOX	ROUNDING	0.08
		RICOH USA INC	PD C85075912	211.25
			PD C85075930	224.26

DEPARTMENT	FUND	VENDOR NAME	DESCRIPTION	AMOUNT_
			PD DESK C85075921	29.56
		HAMPEL OIL INC	BULK GASOHOL/DIESEL	805.79
			BULK GASOHOL/DIESEL	47.51
			BULK GASOHOL/DIESEL	495.28
			BULK GASOHOL/DIESEL	68.78
		VERIZON WIRELESS	CELLULAR SERVICES 12/19- 0	794.83
			CELLULAR SERVICES 12/19- 0	80.02
			CELLULAR SERVICES 12/19- 0	154.95
		INTERNAL REVENUE SERVICE	SOCIAL SECURITY	2,433.84
			SOCIAL SECURITY	183.20
			MEDICARE	569.20
			MEDICARE	42.85
		VISION SERVICE PLAN - IC	RECON 0117	0.09-
			TOTAL:	27,804.00
ANIMAL CONTROL	GENERAL FUND	VERIZON WIRELESS	CELLULAR SERVICES 12/19- 0	31.66_
			TOTAL:	31.66
PLANNING & ENGINEERING	GENERAL FUND	UMB BANK-HSA	HSA - GRAIN VALLEY, MO	135.64
			HSA - GRAIN VALLEY, MO	10.21
		STANDARD INSURANCE CO	JAN 2017 STANDARD INSURANC	46.80
		HAMPEL OIL INC	BULK GASOHOL/DIESEL	34.80
			BULK GASOHOL/DIESEL	11.41
		INTERNAL REVENUE SERVICE	SOCIAL SECURITY	291.07
			SOCIAL SECURITY	21.91
			MEDICARE	68.07
			MEDICARE	5.13_
			TOTAL:	625.04
NON-DEPARTMENTAL	PARK FUND	MO DEPT OF REVENUE	MISSOURI WITHHOLDING	294.43
			MISSOURI WITHHOLDING	22.17
		UMB BANK-HSA	HSA - GRAIN VALLEY, MO	85.76
			HSA - GRAIN VALLEY, MO	6.46
		CITY OF GRAIN VALLEY -FLEX	FLEX - DEPENDENT CARE	212.92
			FLEX - DEPENDENT CARE	16.03
			FLEX PLAN	85.25
			FLEX PLAN	6.42
		ICMA RC	ICMA 457 %	124.53
			ICMA 457 %	9.38
			ICMA 457	307.71
			ICMA 457	23.17
		INTERNAL REVENUE SERVICE	FEDERAL WH	850.99
			FEDERAL WH	64.06
			SOCIAL SECURITY	644.95
			SOCIAL SECURITY	48.55
			MEDICARE	150.84
			MEDICARE	11.36_
			TOTAL:	2,964.98
PARK ADMIN	PARK FUND	NETSTANDARD INC	JAN MONTHLY IT SERVICES	202.94
		UMB BANK-HSA	HSA - GRAIN VALLEY, MO	111.40
			HSA - GRAIN VALLEY, MO	8.39
		STANDARD INSURANCE CO	JAN 2017 STANDARD INSURANC	30.00
		HAMPEL OIL INC	BULK GASOHOL/DIESEL	81.16
		VERIZON WIRELESS	CELLULAR SERVICES 12/19- 0	51.65
		ICMA RC	EMPLOYEE DEDUCTIONS	18.23

DEPARTMENT	FUND	VENDOR NAME	DESCRIPTION	AMOUNT_
			EMPLOYEE DEDUCTIONS	1.38
		INTERNAL REVENUE SERVICE	SOCIAL SECURITY	267.68
			SOCIAL SECURITY	20.15
			MEDICARE	62.60
			MEDICARE	4.72_
			TOTAL:	860.30
PARKS STAFF	PARK FUND	UMB BANK-HSA	HSA - GRAIN VALLEY, MO	93.00
			HSA - GRAIN VALLEY, MO	7.00
		STANDARD INSURANCE CO	JAN 2017 STANDARD INSURANC	36.00
		WEST CENTRAL ELECTRIC COOP INC	04/28-05/28 BALLPARK COMPL	151.37
		INTERNAL REVENUE SERVICE	SOCIAL SECURITY	211.38
			SOCIAL SECURITY	15.92
			MEDICARE	49.43
			MEDICARE	3.73_
			TOTAL:	567.83
RECREATION	PARK FUND	INTERNAL REVENUE SERVICE	SOCIAL SECURITY	2.29
			SOCIAL SECURITY	0.18
			MEDICARE	0.53
			MEDICARE	0.05_
			TOTAL:	3.05
COMMUNITY CENTER	PARK FUND	RICOH USA INC	COMM CTR C85075928	47.15
			COMM CTR C85075922	13.11
		STANDARD INSURANCE CO	JAN 2017 STANDARD INSURANC	12.00
		RICOH USA INC	COMM CTR C85075928	211.25
			CC DESK C85075922	29.58
		VERIZON WIRELESS	CELLULAR SERVICES 12/19- 0	51.52
		INTERNAL REVENUE SERVICE	SOCIAL SECURITY	161.32
			SOCIAL SECURITY	2.25
			SOCIAL SECURITY	12.15
			SOCIAL SECURITY	0.18
			MEDICARE	37.73
			MEDICARE	0.53
			MEDICARE	2.84
			MEDICARE	0.04_
			TOTAL:	581.65
NON-DEPARTMENTAL	TRANSPORTATION	MO DEPT OF REVENUE	MISSOURI WITHHOLDING	118.99
			MISSOURI WITHHOLDING	8.96
		UMB BANK-HSA	HSA - GRAIN VALLEY, MO	64.61
			HSA - GRAIN VALLEY, MO	4.87
		ICMA RC	ICMA 457	19.94
			ICMA 457	1.51
		INTERNAL REVENUE SERVICE	FEDERAL WH	375.91
			FEDERAL WH	28.30
			SOCIAL SECURITY	214.33
			SOCIAL SECURITY	16.14
			MEDICARE	50.12
			MEDICARE	3.78_
			TOTAL:	907.46
TRANSPORTATION	TRANSPORTATION	NETSTANDARD INC	JAN MONTHLY IT SERVICES	121.76
		RICOH USA INC	PW C85075929	2.34
		UMB BANK-HSA	HSA - GRAIN VALLEY, MO	109.10



DEPARTMENT	FUND	VENDOR NAME	DESCRIPTION	AMOUNT_
			HSA - GRAIN VALLEY, MO	8.22
		STANDARD INSURANCE CO	JAN 2017 STANDARD INSURANC	30.60
		GENERAL ELEVATOR	JAN MONTHLY ELEVATOR SERV	8.04
		RICOH USA INC	PW C85075929	42.25
		HAMPEL OIL INC	BULK GASOHOL/DIESEL	85.79
			BULK GASOHOL/DIESEL	119.45
		VERIZON WIRELESS	CELLULAR SERVICES 12/19- 0	24.70
		INTERNAL REVENUE SERVICE	SOCIAL SECURITY	214.34
			SOCIAL SECURITY	16.14
			MEDICARE	50.13
			MEDICARE	3.78_
			TOTAL:	836.64
PUBLIC HEALTH	PUBLIC HEALTH	MID-AMERICA REGIONAL COUNCIL	HHW 2017	13,914.16_
			TOTAL:	13,914.16
NON-DEPARTMENTAL	WATER/SEWER FUND	MO DEPT OF REVENUE	MISSOURI WITHHOLDING	799.40
			MISSOURI WITHHOLDING	60.18
		UMB BANK-HSA	HSA - GRAIN VALLEY, MO	518.60
			HSA - GRAIN VALLEY, MO	39.04
		CITY OF GRAIN VALLEY -FLEX	FLEX - DEPENDENT CARE	76.72
			FLEX - DEPENDENT CARE	5.78
		ICMA RC	ICMA 457 %	185.77
			ICMA 457 %	13.99
			ICMA 457	190.32
			ICMA 457	14.33
		INTERNAL REVENUE SERVICE	FEDERAL WH	2,572.08
			FEDERAL WH	193.60
			SOCIAL SECURITY	1,436.56
			SOCIAL SECURITY	108.13
			MEDICARE	335.99
			MEDICARE	25.29_
			TOTAL:	6,575.78
WATER	WATER/SEWER FUND	NETSTANDARD INC	JAN MONTHLY IT SERVICES	243.52
		BLUE CROSS BLUE SHIELD OF KC	CHAMBERLAIN	450.90-
		RICOH USA INC	PW C85075929	4.68
			CD 85075926	21.14
		CITY OF INDEPENDENCE UTILITIES	17596 100CF 11/17-12/19	27,343.80
		UMB BANK-HSA	HSA - GRAIN VALLEY, MO	340.03
			HSA - GRAIN VALLEY, MO	25.60
		STANDARD INSURANCE CO	JAN 2017 STANDARD INSURANC	97.80
		TRI-COUNTY WATER AUTHORITY	CONSUMPTION	16,167.61
			DEBT	65,542.18
		GENERAL ELEVATOR	JAN MONTHLY ELEVATOR SERV	16.08
		RICOH USA INC	PW C85075929	84.50
			CD C85075926	105.63
		HAMPEL OIL INC	BULK GASOHOL/DIESEL	171.62
			BULK GASOHOL/DIESEL	238.89
		VERIZON WIRELESS	CELLULAR SERVICES 12/19- 0	49.41
		ICMA RC	EMPLOYEE DEDUCTIONS	36.47
			EMPLOYEE DEDUCTIONS	2.75
		INTERNAL REVENUE SERVICE	SOCIAL SECURITY	718.28
			SOCIAL SECURITY	54.07
			MEDICARE	167.97
			MEDICARE	12.65

DEPARTMENT	FUND	VENDOR NAME	DESCRIPTION	AMOUNT_
			TOTAL:	110,993.78
SEWER	WATER/SEWER FUND	NETSTANDARD INC	JAN MONTHLY IT SERVICES	243.52
		RICOH USA INC	PW C85075929	4.68
			CD 85075926	21.14
		UMB BANK-HSA	HSA - GRAIN VALLEY, MO	339.98
			HSA - GRAIN VALLEY, MO	25.59
		STANDARD INSURANCE CO	JAN 2017 STANDARD INSURANC	97.80
		GENERAL ELEVATOR	JAN MONTHLY ELEVATOR SERV	16.08
		RICOH USA INC	PW C85075929	84.50
			CD C85075926	105.62
		HAMPEL OIL INC	BULK GASOHOL/DIESEL	171.62
			BULK GASOHOL/DIESEL	238.89
		VERIZON WIRELESS	CELLULAR SERVICES 12/19- 0	49.41
		ICMA RC	EMPLOYEE DEDUCTIONS	36.47
			EMPLOYEE DEDUCTIONS	2.75
		INTERNAL REVENUE SERVICE	SOCIAL SECURITY	718.27
			SOCIAL SECURITY	54.07
			MEDICARE	168.01
			MEDICARE	12.65
			TOTAL:	2,391.05
NON-DEPARTMENTAL	GENERAL FUND	BLUE CROSS BLUE SHIELD OF KC	PPO	150.26
			PPO	11.32
			PPO	610.73
			PPO	45.97
			HSA	434.04
			HSA	32.68
			HSA	800.58
			HSA	60.26
			HSA	104.82
			HSA	7.90
		KCMO CITY TREASURER	KC EARNINGS TAX WH	35.25
			KC EARNINGS TAX WH	2.66
		DELTA DENTAL OF MO LOCKBOX	DENTAL	72.00
			DENTAL	5.42
			DENTAL	126.24
			DENTAL	9.51
			DENTAL	49.92
			DENTAL	3.76
		FRATERNAL ORDER OF POLICE	EMPLOYEE DEDUCTIONS	251.10
			EMPLOYEE DEDUCTIONS	18.90
		HAMPEL OIL INC	CJC FUEL	393.91
			CJC FUEL	286.14
		AFLAC	AFLAC AFTER TAX	66.37
			AFLAC AFTER TAX	5.00
			AFLAC CRITICAL CARE	6.30
			AFLAC CRITICAL CARE	0.48
			AFLAC PRETAX	198.59
			AFLAC PRETAX	14.95
			AFLAC-W2 DD PRETAX	194.74
			AFLAC-W2 DD PRETAX	14.66
		JASWANT SINGH	WENZEL RESTITUTION	200.00
		HOPE HOUSE	DEC 16 DOMESTIC VIOLENCE	256.00
		MO DEPT OF REVENUE	DEC 16 CVC FUND	449.19
		MO DEPT OF PUBLIC SAFETY	DEC 16 TRAINING FUND	63.00

DEPARTMENT	FUND	VENDOR NAME	DESCRIPTION	AMOUNT_
		VISION SERVICE PLAN - IC	VISION	25.22
			VISION	1.90
			VISION	19.65
			VISION	1.48
			VISION	40.65
			VISION	3.06
			VISION	24.69
			VISION	1.86_
			TOTAL:	5,101.16
HR/CITY CLERK	GENERAL FUND	B&B THEATRES	OVERCHARGED	20.00
			XMAS PARTY PRIZE	20.00
			XMAS PARTY PRIZE	20.00
			XMAS PARTY PRIZE	20.00
			XMAS PARTY PRIZE	20.00
			XMAS PARTY PRIZE	20.00
		US HEALTHWORKS	LAMB: SCREENING	151.00
		WALMART COMMUNITY	XMAS PARTY PRIZE	11.88
		ARC PHYSICAL THERAPY PLUS LP	LAMB: WORKSTEPS	150.00
		AMAZON.COM	XMAS PARTY PRIZE	89.99
			XMAS PARTY PRIZES	146.84
		PARTY CITY	XMAS PARTY DECOR	11.98
			XMAS PARTY DECOR	9.95
			XMAS PARTY RETURNS	3.99-
		SM CORPORATE CARE	MEYER: TESTING	65.00
		MAIN EVENT	XMAS PARTY PRIZE	50.00
		MASSARGELUXE	XMAS PARTY PRIZE	75.00
		INSIGHT PUBLIC SAFETY AND FORENSIC CON	SPARKS: NEW HIRE EVALUATIO	450.00
		CREATIVE NAIL SALON	XMAS PARTY PRIZE	50.00
		BATH AND BODY WORKS	XMAS PARTY PRIZE	25.00
		OLD CHICAGO	XMAS PARTY PRIZE	50.00
		DULUTH TRADING	XMAS PARTY PRIZE	50.00
		CASEYS GENERAL STORE	XMAS PARTY PRIZE	25.00
		HOBBY LOBBY	XMAS DECORATIONS	21.96_
			TOTAL:	1,549.61
INFORMATION TECH	GENERAL FUND	BLUE CROSS BLUE SHIELD OF KC	HSA	4.63
			HSA	0.35
		MISSOURI LAGERS	MONTHLY CONTRIBUTIONS	3.01
			MONTHLY CONTRIBUTIONS	0.23
		DELTA DENTAL OF MO LOCKBOX	DENTAL	0.41
			DENTAL	0.04
		APPLE ITUNES	HUNT IPAD SOFTWARE	6.99
			HUNT IPAD SOFTWARE	6.99
		TYLER TECHNOLOGIES INC	COURT CASE MGMT MAINT 2017	2,152.86_
			TOTAL:	2,175.51
BLDG & GRDS	GENERAL FUND	BLUE CROSS BLUE SHIELD OF KC	HSA	95.30
			HSA	7.18
		MAINTENANCE SUPPLY CO INC	GOJO TFX GREEN SEAL HANDWA	73.80
		MISSOURI GAS ENERGY	624 JAMES ROLLO CT	37.58
			711 S MAIN ST	82.56
		MISSOURI LAGERS	MONTHLY CONTRIBUTIONS	46.50
			MONTHLY CONTRIBUTIONS	3.51
		ENVIROSTAR WASTE SERVICE INC	DEC 16 DISPOSAL	49.68
		AMAZON.COM	INSTALLATION KITS FOR T8 L	20.97

DEPARTMENT	FUND	VENDOR NAME	DESCRIPTION	AMOUNT_
			T8 LED LIGHT TUBE, 2FT, 50	71.58
		ORKIN	06/15/15 SERVICE	65.66
		DELTA DENTAL OF MO LOCKBOX	DENTAL	8.58
			DENTAL	0.65
		HOME DEPOT CREDIT SERVICES	PAINT ROLLERS/BRUSHES	40.77
			TEKS LATHE 8X1/2" SHP PT	5.87
		NEW DIRECTIONS BEHAVIORAL	1ST QTR EAP SERVICES	3.31
		GREGS LOCK & KEY SERVICE INC	DRILL & INSTALL NEW CLOSER	172.00
		FOLEY COMPANY	REPLACED BLOWER MOTOR	853.98_
			TOTAL:	1,639.48
ADMINISTRATION	GENERAL FUND	BLUE CROSS BLUE SHIELD OF KC	HSA	298.39
			HSA	22.47
			HSA	141.03
			HSA	10.62
			HSA	46.50
			HSA	3.50
		MISSOURI LAGERS	MONTHLY CONTRIBUTIONS	259.73
			MONTHLY CONTRIBUTIONS	19.55
		OFFICE DEPOT	PIO DESK	740.00
		PERFORMANCE PRINTING INC	MURPHY BUSINESS CARDS	32.25
		VISA-CARD SERVICES 0139	PARTY CITY CREDIT	32.14-
		DELTA DENTAL OF MO LOCKBOX	DENTAL	28.29
			DENTAL	2.13
			DENTAL	12.67
			DENTAL	0.96
			DENTAL	13.01
			DENTAL	0.98
		QUIKTRIP #00150	HUNT FUEL	28.42
			HUNT FUEL	45.12
		AFLAC	HUNT PREMIUMS	2.12
			HUNT PREMIUMS	0.16
			HUNT PREMIUMS	26.26
			HUNT PREMIUMS	1.98
			HUNT PREMIUMS	30.23
			HUNT PREMIUMS	2.28
		APPLE ITUNES	HUNT ITUNES CHARGE/REIMBUR	2.99
		NEW DIRECTIONS BEHAVIORAL	1ST QTR EAP SERVICES	11.60
		THE EXAMINER	12 MONTHS SUBSCRIPTION	84.03
		VISION SERVICE PLAN - IC	VISION	6.84
			VISION	0.52_
			TOTAL:	1,842.49
FINANCE	GENERAL FUND	BLUE CROSS BLUE SHIELD OF KC	HSA	191.84
			HSA	14.44
		MISSOURI LAGERS	MONTHLY CONTRIBUTIONS	178.03
			MONTHLY CONTRIBUTIONS	13.41
		DELTA DENTAL OF MO LOCKBOX	DENTAL	8.58
			DENTAL	0.65
			DENTAL	11.76
			DENTAL	0.89
		GOVERNMENT FINANCE	BOWDEN 2017 MEMBERSHIP	170.00_
			TOTAL:	589.60
COURT	GENERAL FUND	BLUE CROSS BLUE SHIELD OF KC	HSA	190.61
			HSA	14.35

DEPARTMENT	FUND	VENDOR NAME	DESCRIPTION	AMOUNT_
		MISSOURI LAGERS	MONTHLY CONTRIBUTIONS	132.11
			MONTHLY CONTRIBUTIONS	9.95
		ETS CORPORATION	MONTHLY CREDIT CHARGE	8.57
		DELTA DENTAL OF MO LOCKBOX	DENTAL	17.16
			DENTAL	1.30
		MACA	2017 BOARDMAN DUES	60.00
		NEW DIRECTIONS BEHAVIORAL	1ST QTR EAP SERVICES	6.63
		RAY COUNTY SHERIFFS DEPARTMENT	DECEMBER 2016	640.00_
			TOTAL:	1,080.68
VICTIM SERVICES	GENERAL FUND	BLUE CROSS BLUE SHIELD OF KC	HSA	276.38
			HSA	20.81
		MISSOURI LAGERS	MONTHLY CONTRIBUTIONS	104.06
			MONTHLY CONTRIBUTIONS	7.84
		DELTA DENTAL OF MO LOCKBOX	DENTAL	24.83
			DENTAL	1.87
		NEW DIRECTIONS BEHAVIORAL	1ST QTR EAP SERVICES	6.63
			1ST QTR EAP SERVICES	6.63_
			TOTAL:	449.05
FLEET	GENERAL FUND	BLUE CROSS BLUE SHIELD OF KC	HSA	176.66
			HSA	13.30
		AIRGAS USA LLC	OXYGEN INDUSTRIAL 200 CGA	138.83
			CUP SHLD MARKED STD PACKAR	161.34
		MISSOURI LAGERS	MONTHLY CONTRIBUTIONS	118.20
			MONTHLY CONTRIBUTIONS	8.90
		ADVANCE AUTO PARTS	3/4"X50' BK STD HH 1 FT	2.96
			10) MINI BULB	9.00
			OIL 5W30 FULL SYN 1 QT	202.50
			BRAKE CLEANER/GASKET	43.87
		OREILLY AUTOMOTIVE INC	OXYFUEL OUTFIT	279.99
			HEAT NOZZLE	78.23
		DELTA DENTAL OF MO LOCKBOX	DENTAL	21.53
			DENTAL	1.63
		NEW DIRECTIONS BEHAVIORAL	1ST QTR EAP SERVICES	3.31
		CINTAS CORPORATION # 430	PW/WOLTZ UNIFORMS	9.48
			PW/WOLTZ UNIFORMS	9.48_
			TOTAL:	1,279.21
POLICE	GENERAL FUND	BLUE CROSS BLUE SHIELD OF KC	PPO	276.38
			PPO	20.81
			PPO	781.51
			PPO	58.83
			HSA	552.77
			HSA	41.61
			HSA	2,096.74
			HSA	157.82
			HSA	1,563.03
			HSA	117.65
			HSA	295.45
			HSA	22.24
		GALLS LLC	3) CLOTH SGT CHEVRONS 3 1/	34.02
			A6129 7/16 STAR RANK INSIG	24.11
			BATES 6IN CUSTOM COMFORT S	106.53
		MISSOURI LAGERS	EMPLOYER CONTRIBUTIONS	3,494.18
			EMPLOYER CONTRIBUTIONS	263.01

DEPARTMENT	FUND	VENDOR NAME	DESCRIPTION	AMOUNT_
			MONTHLY CONTRIBUTIONS	238.74
			MONTHLY CONTRIBUTIONS	17.98
		MO POLICE CHIEFS ASSOCIATION	STEELE: COMMAND COLLEGE	150.00
			2017 STARBUCK MEMBERSHIP	200.00
		ADVANCE AUTO PARTS	MANIFOLD GASKET	14.52
			NGK STANDARD PLUG	9.48
		MCDONALDS	DEPT XMAS PRIZES	30.00
		WALMART COMMUNITY	100) 5X7 GREETING CARD	81.45
		ED M FELD EQUIPMENT CO INC	IIAMS: BOOTS	90.00
		AMAZON.COM	PORTABLE DVD EXTERNAL DRIV	30.31
		OREILLY AUTOMOTIVE INC	TENSIONER/MIRCO-V BELT	87.28
			BWD-FUEL I	44.65
			PCV ELBOW	5.99
			PIGTAIL	15.97
		INTERSTATE ALL BATTERY CENTER	36) 3V 1.55AH LIT 2/3A CR1	89.64
		STEVEN SMITH	THOMPSON: BUSINESS CARDS	54.00
		DELTA DENTAL OF MO LOCKBOX	DENTAL	74.49
			DENTAL	5.61
			DENTAL	188.84
			DENTAL	14.22
			DENTAL	153.86
			DENTAL	11.59
			DENTAL	69.72
			DENTAL	5.25
		SHAWN VAUGHAN	VAUGHAN: BOOT REIMBURSEMEN	100.00
		CAPITAL PLAZA	MPCA LODGING: STARBUCK	302.88
		LEXISNEXIS RISK DATA MGMT INC	DEC 16 ACTIVITY	49.00
		GOODYEAR COMMERCIAL TIRE	2) GY 245/55R18 EAG VSB 10	254.00
			1) GY 245/55R18 EAG RSA VS	127.00
		TUSCONOS	DEPT XMAS PARTY	459.90
		MIDWAY TRAVEL	MPCA CONF: FUEL	21.97
		INTL ASSN OF CHIEFS OF POLICE	STARBUCK MEMBERSHIP	150.00
		METROPOLITAN CHIEFS & SHERIFFS	2017 STARBUCK MEMBERSHIP	125.00
		NEW DIRECTIONS BEHAVIORAL	1ST QTR EAP SERVICES	139.17
		LEES SUMMIT	MODULE-PO/CORE DEPOSIT	550.60
			CORE DEPOSIT REFUND	125.00-
		HEART OF AMERICA COUNCIL	MIDDLE SCHOOL EXPLORERS	40.00
			HIGH SCHOOL EXPLORERS	112.00
		JENNIFER MCCLURE	BOOT ALLOWANCE REIMBURSEME	100.00
		SARGENT AUTO & DIESEL REPAIR LLC	09 DODGE: PCM & REFLASHED	184.03
		REJIS COMMISSION	DEC 16 LEWEB SUBSCRIPTION	247.07
		MISSOURI PEACE OFFICERS ASSN	2017 MEMBERSHEIPS	450.00_
			TOTAL:	14,877.90
ANIMAL CONTROL	GENERAL FUND	NACA	SPARKS: MODULE A	525.00_
			TOTAL:	525.00
PLANNING & ENGINEERING	GENERAL FUND	BLUE CROSS BLUE SHIELD OF KC	HSA	428.39
			HSA	32.25
			HSA	260.53
			HSA	19.61
		MID-AMERICA REGIONAL COUNCIL	ARROYO: 17 KC URBAN STORMW	150.00
		MISSOURI LAGERS	MONTHLY CONTRIBUTIONS	412.89
			MONTHLY CONTRIBUTIONS	31.08
		PERFORMANCE PRINTING INC	ARROYO BUSINESS CARDS	32.25
		DELTA DENTAL OF MO LOCKBOX	DENTAL	13.66

DEPARTMENT	FUND	VENDOR NAME	DESCRIPTION	AMOUNT_
			DENTAL	1.03
			DENTAL	40.64
			DENTAL	3.06
		NEW DIRECTIONS BEHAVIORAL	1ST QTR EAP SERVICES	23.53
		JACKSON COUNTY RECORDER	LIEN RELEASES	75.00_
			TOTAL:	1,523.92
NON-DEPARTMENTAL	PARK FUND	BLUE CROSS BLUE SHIELD OF KC	PPO	33.94
			PPO	2.56
			HSA	179.94
			HSA	13.55
			HSA	104.82
			HSA	7.90
		KCMO CITY TREASURER	KC EARNINGS TAX WH	14.72
			KC EARNINGS TAX WH	1.11
		DELTA DENTAL OF MO LOCKBOX	DENTAL	15.62
			DENTAL	1.18
			DENTAL	25.24
			DENTAL	1.91
			DENTAL	1.11
			DENTAL	0.09
		AFLAC	AFLAC CRITICAL CARE	3.23
			AFLAC CRITICAL CARE	0.25
			AFLAC PRETAX	16.83
			AFLAC PRETAX	1.27
			AFLAC-W2 DD PRETAX	17.31
			AFLAC-W2 DD PRETAX	1.31
		MISCELLANEOUS	DON HAWES:	50.00
			DON HAWES:	50.00
			VERNA FREELS:	50.00
		VISION SERVICE PLAN - IC	VISION	5.64
			VISION	0.43_
			TOTAL:	599.96
PARK ADMIN	PARK FUND	BLUE CROSS BLUE SHIELD OF KC	HSA	58.49
			HSA	4.41
			HSA	579.84
			HSA	43.65
			HSA	37.87
			HSA	2.86
		MISSOURI LAGERS	MONTHLY CONTRIBUTIONS	390.62
			MONTHLY CONTRIBUTIONS	29.41
		WALMART COMMUNITY	JONES: UNIFORM JEANS	71.79
		PERFORMANCE PRINTING INC	MEYER: BUSINESS CARDS	32.25
		DELTA DENTAL OF MO LOCKBOX	DENTAL	5.54
			DENTAL	0.42
			DENTAL	27.25
			DENTAL	2.06
			DENTAL	3.38
			DENTAL	0.26
			DENTAL	30.77
			DENTAL	2.32
			DENTAL	2.29
			DENTAL	0.18
		AFLAC	HUNT PREMIUMS	0.41
			HUNT PREMIUMS	0.04

DEPARTMENT	FUND	VENDOR NAME	DESCRIPTION	AMOUNT_
			HUNT PREMIUMS	5.15
			HUNT PREMIUMS	0.39
			HUNT PREMIUMS	5.92
			HUNT PREMIUMS	0.45
		MISSOURI PARK & REC ASSN	2017 MPRA MEMBERSHIP	760.00
		NEW DIRECTIONS BEHAVIORAL	1ST QTR EAP SERVICES	16.57
		VISION SERVICE PLAN - IC	VISION	1.33
			VISION	0.11
			TOTAL:	2,116.03
PARKS STAFF	PARK FUND	BLUE CROSS BLUE SHIELD OF KC	PPO	190.61
			PPO	14.35
			HSA	190.61
			HSA	14.35
			HSA	295.45
			HSA	22.24
		MISSOURI GAS ENERGY	600 BUCKNER TARSNEY RD	115.03
			624 JAMES ROLLO CT	18.81
		MISSOURI LAGERS	MONTHLY CONTRIBUTIONS	295.87
			MONTHLY CONTRIBUTIONS	22.28
		DELTA DENTAL OF MO LOCKBOX	DENTAL	51.50
			DENTAL	3.88
		NEW DIRECTIONS BEHAVIORAL	1ST QTR EAP SERVICES	19.88
			TOTAL:	1,254.86
COMMUNITY CENTER	PARK FUND	MELODY TAYLOR	12/14-01/11 SILVERSNEAKERS	300.00
			12/19-01/19 SILVERSNEAKERS	75.00
		MISSOURI GAS ENERGY	713 S MAIN ST	300.04
			713 S MAIN ST #A	38.15
		MISSOURI LAGERS	MONTHLY CONTRIBUTIONS	123.71
			MONTHLY CONTRIBUTIONS	9.32
		WALMART COMMUNITY	JANITORIAL SUPPLIES	70.58
		ETS CORPORATION	MONTHLY CREDIT CHARGE	97.07
		ENVIROSTAR WASTE SERVICE INC	DEC 16 DISPOSAL	55.00
			DEC 16 DISPOSAL	21.60
		AUTHORIZE.NET	DEC MONTHLY SIGNUPS	33.90
		DELTA DENTAL OF MO LOCKBOX	DENTAL	17.16
			DENTAL	1.30
		KORNIS ELECTRIC SUPPLY INC	BUILDING SUPPLIES	66.00
		GLOBALINDUSTRIAL.COM	JANITORIAL SUPPLIES	61.90
		NEW DIRECTIONS BEHAVIORAL	1ST QTR EAP SERVICES	6.63
		FREDAH JOHNSTON	12/15-01/10 LINE DANCING	192.00
		MCQUEENY LOCK COMPANY	MENS RESTROOM PARTITION	90.00
			TOTAL:	1,559.36
NON-DEPARTMENTAL	TRANSPORTATION	BLUE CROSS BLUE SHIELD OF KC	PPO	30.04
			PPO	2.27
			HSA	21.44
			HSA	1.62
			HSA	160.10
			HSA	12.06
		DELTA DENTAL OF MO LOCKBOX	DENTAL	3.56
			DENTAL	0.27
			DENTAL	15.14
			DENTAL	1.15
			DENTAL	2.25



DEPARTMENT	FUND	VENDOR NAME	DESCRIPTION	AMOUNT_
			DENTAL	0.17
		AFLAC	AFLAC PRETAX	6.28
			AFLAC PRETAX	0.48
			AFLAC-W2 DD PRETAX	7.48
			AFLAC-W2 DD PRETAX	0.57
		VISION SERVICE PLAN - IC	VISION	1.03
			VISION	0.08
			VISION	5.41
			VISION	0.41
			VISION	1.64
			VISION	0.13
			TOTAL:	273.58
TRANSPORTATION	TRANSPORTATION	FOLEY INDUSTRIES	ROLLER GP-CA	41.48
		BLUE CROSS BLUE SHIELD OF KC	PPO	55.26
			PPO	4.17
			HSA	69.09
			HSA	5.21
			HSA	247.03
			HSA	18.60
			HSA	312.59
			HSA	23.53
		GARY S KLEOPPEL	3) 894LT 4-BUTTON REMOTE	52.80
		FELDMANS FARM & HOME	3.0 GPM 45 PSI 12VDC PUMP	222.30
			3/4" X 150' RUBBER HOSE PE	19.90
		K C BOBCAT	WEAR BAR FOR PLANER	22.51
		MISSOURI GAS ENERGY	405 JAMES ROLLO DR	97.62
			624 JAMES ROLLO CT	37.58
			711 S MAIN ST	7.07
			405 JAMES ROLLO DR	81.45
		MISSOURI LAGERS	MONTHLY CONTRIBUTIONS	276.12
			MONTHLY CONTRIBUTIONS	20.79
		OFFICE DEPOT	PIO DESK	41.99
			CHAIR/EXEC/SERTA	59.99
			CHAIR/EXEC/SERTA	47.88
		OREILLY AUTOMOTIVE INC	FUEL FILTER	8.06
			MEGACRIMP/HYD HOSE	56.20
		ORKIN	06/15/15 SERVICE	5.63
		BLUE SPRINGS WINWATER CO	2) 1" CUTTER SHELL FOR PVC	18.40
		DELTA DENTAL OF MO LOCKBOX	DENTAL	6.21
			DENTAL	0.47
			DENTAL	25.68
			DENTAL	1.94
			DENTAL	18.46
			DENTAL	1.40
			DENTAL	4.65
			DENTAL	0.35
		VANCE BROTHERS INC	FINE MIX	250.00
			VIRGIN SURFACE	550.00
			VIRGIN SURFACE MIX	550.00
		TURNER & MICHAEL CONSTRUCTION	GV CURB REPAIR VARIOUS LOC	6,660.00
		NEW DIRECTIONS BEHAVIORAL	1ST QTR EAP SERVICES	15.91
		CINTAS CORPORATION # 430	PW/WOLTZ UNIFORMS	20.42
			PW/WOLTZ UNIFORMS	17.37
		VIKING-CIVES MIDWEST INC	8K DROP FOOT JACK RETURN	9.90-
			8K DROP FOOT JACK	9.90

DEPARTMENT	FUND	VENDOR NAME	DESCRIPTION	AMOUNT_
			10K G/N JACK SPRING	25.46_
			TOTAL:	10,001.57
TIF-OLD TOWN MKT PLACE	OLD TOWNE TIF	OLD TOWNE MARKETPLACE LLC	4TH QTR CITY	21,003.03_
			TOTAL:	21,003.03
NON-DEPARTMENTAL	MKTPL TIF-PR#2 SPE	UMB BANK	MTKPL TIF, PRO #2, SALES,	7,841.13
			MTKPL TIF, PRO #2, SALES,	26,252.78
		CENTRAL JACKSON COUNTY FPD	PAYMENT 50% PROPERTY TAX	1,751.68_
			TOTAL:	35,845.59
NON-DEPARTMENTAL	MKT PLACE NID- PR#	STANDARD & POORS	TAXABLE-NEIGHBORHOOD IMPT	413.00_
			TOTAL:	413.00
NON-DEPARTMENTAL	MKT PL CID-PR2 SAL	UMB BANK	MTKPL TIF, PRO #2, SALES,	5,610.49_
			TOTAL:	5,610.49
NON-DEPARTMENTAL	INTRCHG TIF- PR #1	CENTRAL JACKSON COUNTY FPD	PAYMENT 50% PROPERTY TAX	1,072.86_
			TOTAL:	1,072.86
DEBT SERVICE	DEBT SERVICE FUND	THE BANK OF NEW YORK MELLON	GV MO GOB BONDS SERIES 200	265,000.00
			GV MO GOB BONDS SERIES 200	82,280.00
		UMB BANK NA	GV MO GO RFDG BDS SRS 2013	318.00_
			TOTAL:	347,598.00
NON-DEPARTMENTAL	WATER/SEWER FUND	BLUE CROSS BLUE SHIELD OF KC	PPO	120.22
			PPO	9.05
			HSA	136.52
			HSA	10.28
			HSA	640.47
			HSA	48.21
			HSA	104.82
			HSA	7.90
		KCMO CITY TREASURER	KC EARNINGS TAX WH	7.26
			KC EARNINGS TAX WH	0.55
		DELTA DENTAL OF MO LOCKBOX	DENTAL	22.64
			DENTAL	1.71
			DENTAL	60.59
			DENTAL	4.57
			DENTAL	25.54
			DENTAL	1.93
		AFLAC	AFLAC PRETAX	48.27
			AFLAC PRETAX	3.64
			AFLAC-W2 DD PRETAX	51.00
			AFLAC-W2 DD PRETAX	3.84
		VISION SERVICE PLAN - IC	VISION	9.67
			VISION	0.73
			VISION	21.68
			VISION	1.64
			VISION	6.58
			VISION	0.50_
			TOTAL:	1,349.81
WATER	WATER/SEWER FUND	FOLEY INDUSTRIES	ROLLER GP-CA	82.94
		BLUE CROSS BLUE SHIELD OF KC	PPO	110.54
			PPO	8.33

DEPARTMENT	FUND	VENDOR NAME	DESCRIPTION	AMOUNT_
			HSA	117.00
			HSA	8.81
			HSA	219.97
			HSA	16.56
			HSA	804.12
			HSA	60.53
			HSA	625.21
			HSA	47.06
			HSA	147.72
			HSA	11.12
		PEREGRINE CORPORATION	DEC MONTHLY BILL PRINTING	423.29
			DEC MONTHLY BILL PRINTING	82.52
		GARY S KLEOPPEL	3) 894LT 4-BUTTON REMOTE	105.60
		K C BOBCAT	WEAR BAR FOR PLANER	45.00
		MISSOURI GAS ENERGY	405 JAMES ROLLO DR	195.35
			624 JAMES ROLLO CT	46.96
			711 S MAIN ST	14.16
			405 JAMES ROLLO DR	162.98
		MISSOURI LAGERS	MONTHLY CONTRIBUTIONS	937.02
			MONTHLY CONTRIBUTIONS	70.53
		VANCO SERVICES LLC	DEC 16 GATEWAY ES20605	74.29
		ETS CORPORATION	MONTHLY CREDIT CHARGE	892.31
			MONTHLY CREDIT CHARGE	587.07
		OFFICE DEPOT	PIO DESK	83.98
			CHAIR/EXEC/SERTA	120.00
		ENVIROSTAR WASTE SERVICE INC	DEC 16 DISPOSAL	18.36
		OREILLY AUTOMOTIVE INC	FUEL FILTER	16.12
		ORKIN	06/15/15 SERVICE	11.25
		MISSOURI ONE CALL SYSTEM INC	DEC 162 LOCATES	210.60
		BLUE SPRINGS WINWATER CO	2) 1" CUTTER SHELL FOR PVC	36.80
			2) SS TAPT 3/4CC REPAIR CL	340.00
		DELTA DENTAL OF MO LOCKBOX	DENTAL	11.09
			DENTAL	0.84
			DENTAL	19.76
			DENTAL	1.49
			DENTAL	78.60
			DENTAL	5.92
			DENTAL	36.92
			DENTAL	2.78
			DENTAL	26.35
			DENTAL	1.99
		QUIKTRIP #00150	HUNT FUEL	14.21
		AFLAC	HUNT PREMIUMS	0.82
			HUNT PREMIUMS	0.07
			HUNT PREMIUMS	10.29
			HUNT PREMIUMS	0.78
			HUNT PREMIUMS	11.85
			HUNT PREMIUMS	0.90
		NEW DIRECTIONS BEHAVIORAL	1ST QTR EAP SERVICES	52.36
		CINTAS CORPORATION # 430	PW/WOLTZ UNIFORMS	30.23
			PW/WOLTZ UNIFORMS	34.72
		VIKING-CIVES MIDWEST INC	8K DROP FOOT JACK RETURN	19.80-
			8K DROP FOOT JACK	19.80
			10K G/N JACK SPRING	50.94
		MIRROR IMAGE EXPRESS CARWASH	HUNT REOCCURING CHARGE	15.50
		TYLER TECHNOLOGIES INC	JAN MONTHLY FEES	97.00

DEPARTMENT	FUND	VENDOR NAME	DESCRIPTION	AMOUNT_
			UTILITY BILLING NOTIFICATI	72.75
		SCHULTE SUPPLY INC	12" X 3/4" BRASS SADDLE FO	175.65
		VISION SERVICE PLAN - IC	VISION	2.67
			VISION	0.21
			TOTAL:	7,490.79
SEWER	WATER/SEWER FUND	CITY OF BLUE SPRINGS	4TH QTR SEWER OCT-DEC 2016	87,333.84
		FOLEY INDUSTRIES	ROLLER GP-CA	82.94
		BLUE CROSS BLUE SHIELD OF KC	PPO	110.56
			PPO	8.33
			HSA	117.00
			HSA	8.81
			HSA	219.97
			HSA	16.56
			HSA	804.06
			HSA	60.53
			HSA	625.22
			HSA	47.07
			HSA	147.73
			HSA	11.12
		PEREGRINE CORPORATION	DEC MONTHLY BILL PRINTING	423.30
			DEC MONTHLY BILL PRINTING	82.53
		GARY S KLEOPPEL	3) 894LT 4-BUTTON REMOTE	105.60
		K C BOBCAT	WEAR BAR FOR PLANER	45.00
		MISSOURI GAS ENERGY	405 JAMES ROLLO DR	195.55
			624 JAMES ROLLO CT	46.95
			711 S MAIN ST	14.14
			405 JAMES ROLLO DR	163.15
		MISSOURI LAGERS	MONTHLY CONTRIBUTIONS	936.99
			MONTHLY CONTRIBUTIONS	70.53
		VANCO SERVICES LLC	DEC 16 GATEWAY ES20605	74.29
		ETS CORPORATION	MONTHLY CREDIT CHARGE	892.32
			MONTHLY CREDIT CHARGE	587.06
		OFFICE DEPOT	PIO DESK	83.99
			CHAIR/EXEC/SERTA	120.00
		ENVIROSTAR WASTE SERVICE INC	DEC 16 DISPOSAL	18.36
		OREILLY AUTOMOTIVE INC	FUEL FILTER	16.12
		ORKIN	06/15/15 SERVICE	11.25
		BLUE SPRINGS WINWATER CO	19) TRIVIEW 48" STD WATER	486.00
			2) 1" CUTTER SHELL FOR PVC	36.80
			2) 4X20 4.74-5.14	435.00
		DELTA DENTAL OF MO LOCKBOX	DENTAL	11.09
			DENTAL	0.84
			DENTAL	19.75
			DENTAL	1.49
			DENTAL	78.60
			DENTAL	5.92
			DENTAL	36.93
			DENTAL	2.78
			DENTAL	26.35
			DENTAL	1.99
		QUIKTRIP #00150	HUNT FUEL	14.21
		AFLAC	HUNT PREMIUMS	0.81
			HUNT PREMIUMS	0.07
			HUNT PREMIUMS	10.29
			HUNT PREMIUMS	0.78

DEPARTMENT	FUND	VENDOR NAME	DESCRIPTION	AMOUNT_
			HUNT PREMIUMS	11.85
			HUNT PREMIUMS	0.90
		NEW DIRECTIONS BEHAVIORAL	1ST QTR EAP SERVICES	52.35
		CINTAS CORPORATION # 430	PW/WOLTZ UNIFORMS	30.23
			PW/WOLTZ UNIFORMS	34.72
		VIKING-CIVES MIDWEST INC	8K DROP FOOT JACK RETURN	19.80-
			8K DROP FOOT JACK	19.80
			10K G/N JACK SPRING	50.94
		MIRROR IMAGE EXPRESS CARWASH	HUNT REOCCURING CHARGE	15.50
		TYLER TECHNOLOGIES INC	JAN MONTHLY FEES	97.00
			UTILITY BILLING NOTIFICATI	72.75
		VISION SERVICE PLAN - IC	VISION	2.68
			VISION	0.21_
			TOTAL:	95,019.70
NON-DEPARTMENTAL	POOLED CASH FUND	VISA-CARD SERVICES 1184	VISA-CARD SERVICES 1184	242.55
		VISA-CARD SERVICES 1317	VISA-CARD SERVICES 1317	504.85
		VISA-CARD SERVICES 1325	VISA-CARD SERVICES 1325	1,248.66
		VISA-CARD SERVICES 0139	VISA-CARD SERVICES 0139	1,244.90
		VISA-CARD SERVICES 0749	VISA-CARD SERVICES 0749	663.60
		VISA-CARD SERVICES 1028	VISA-CARD SERVICES 1028	945.80

\* REFUND CHECKS \*

DEPARTMENT	FUND	VENDOR NAME	DESCRIPTION	AMOUNT_
NON-DEPARTMENTAL	WATER/SEWER FUND	JONES, DARRYL A	US REFUNDS	35.87
		FOUSHEE HOMES I	US REFUNDS	35.56
		PJ HOMES LLC	US REFUNDS	30.29
		ARMSTRONG, JOYC	US REFUNDS	33.67
		VALDEZ, ERIN	US REFUNDS	50.23
		LAWS, WALLY	US REFUNDS	33.67
		DOERHOFF, JASON	US REFUNDS	7.81
		RACETTE, JAMES	US REFUNDS	83.67
		WEBSTER, JOSEPH	US REFUNDS	104.71
		BOWERS, SHANE	US REFUNDS	65.54
		HEARN, GARY	US REFUNDS	13.55
		RAY, JOHNNIE	US REFUNDS	67.34
		DARST, JOHN	US REFUNDS	58.01
		PIEL, CAROLYN S	US REFUNDS	70.79
		CORNIO, MICHAEL	US REFUNDS	40.66
		CARY, BRANDON	US REFUNDS	50.00
			TOTAL:	5,631.73

===== FUND TOTALS =====

100	GENERAL FUND	81,175.26
200	PARK FUND	10,508.02
210	TRANSPORTATION	12,019.25
230	PUBLIC HEALTH	13,914.16
250	OLD TOWNE TIF	21,003.03
302	MKTPL TIF-PR#2 SPEC ALLOC	35,845.59
310	MKT PLACE NID- PR#2	413.00
321	MKT PL CID-PR2 SALES/USE	5,610.49
325	INTRCHG TIF- PR #1,3,4	1,072.86
400	DEBT SERVICE FUND	347,598.00
600	WATER/SEWER FUND	224,602.28
999	POOLED CASH FUND	4,850.36
-----		
	GRAND TOTAL:	758,612.30
-----		

SELECTION CRITERIA

-----  
SELECTION OPTIONS

VENDOR SET: 01-CITY OF GRAIN VALLEY  
VENDOR: All  
CLASSIFICATION: All  
BANK CODE: All  
ITEM DATE: 12/31/2016 THRU 1/13/2017  
ITEM AMOUNT: 99,999,999.00CR THRU 99,999,999.00  
GL POST DATE: 0/00/0000 THRU 99/99/9999  
CHECK DATE: 0/00/0000 THRU 99/99/9999  
-----

PAYROLL SELECTION

PAYROLL EXPENSES: NO  
CHECK DATE: 0/00/0000 THRU 99/99/9999  
-----

PRINT OPTIONS

PRINT DATE: None  
SEQUENCE: By Department  
DESCRIPTION: Distribution  
GL ACCTS: NO  
REPORT TITLE: C O U N C I L R E P O R T  
SIGNATURE LINES: 0  
-----

PACKET OPTIONS

INCLUDE REFUNDS: YES  
INCLUDE OPEN ITEM: YES  
-----

INTENTIONALLY LEFT BLANK



*Previous  
Business*

INTENTIONALLY LEFT BLANK

**CITY OF GRAIN VALLEY  
BOARD OF ALDERMEN AGENDA ITEM**

<b>MEETING DATE</b>	01/09/2017 (Tabled) & 01/23/2017	
<b>BILL NUMBER</b>	R17-01	
<b>AGENDA TITLE</b>	<b>A RESOLUTION BY THE BOARD OF ALDERMEN OF THE CITY OF GRAIN VALLEY, MISSOURI AUTHORIZING THE CITY ADMINISTRATOR TO ENTER INTO AN AGREEMENT WITH RON'S AUTO &amp; TRUCK TOWING FOR TOWING SERVICES</b>	
<b>REQUESTING DEPARTMENT</b>	Police	
<b>PRESENTER</b>	David Starbuck, Chief of Police	
<b>FISCAL INFORMATION</b>	Cost as recommended:	Not Applicable
	Budget Line Item:	Not Applicable
	Balance Available:	Not Applicable
	New Appropriation Required:	<input type="checkbox"/> Yes <input checked="" type="checkbox"/> No
<b>PURPOSE</b>	To provide towing services on request by the Grain Valley Police Department for the period of January 15, 2017 – January 15, 2019	
<b>BACKGROUND</b>	The current towing contract expired in 2015. Area towing services are used to respond and tow vehicles involved in traffic accidents, when drivers have been arrested or no responsible person is available to remove the vehicle from the scene. Calls may include abandoned, illegally parked vehicles or vehicles involved in crime scenes.	
<b>SPECIAL NOTES</b>	None	
<b>ANALYSIS</b>	None	
<b>PUBLIC INFORMATION PROCESS</b>	The Notice of Request for Proposals was advertised in the Examiner from November 9-12, 15-19 and 22, 2016.	

<b>BOARD OR COMMISSION RECOMMENDATION</b>	None
<b>DEPARTMENT RECOMMENDATION</b>	Staff Recommends Approval
<b>REFERENCE DOCUMENTS ATTACHED</b>	Resolution, 01/09/2017 Memo & 01/11/2017 Memo, Submitted Request for Proposal (including references) & Evaluation Criteria

**CITY OF  
GRAIN VALLEY**

**STATE OF  
MISSOURI**

*January 23, 2017*

RESOLUTION NUMBER  
R17-01

SPONSORED BY  
*ALDERMAN JOHNSTON*

**A RESOLUTION BY THE BOARD OF ALDERMEN OF THE CITY OF GRAIN VALLEY, MISSOURI AUTHORIZING THE CITY ADMINISTRATOR TO ENTER INTO AN AGREEMENT WITH RON'S AUTO & TRUCK TOWING FOR TOWING SERVICES**

**WHEREAS**, the Board of Alderman of the City of Grain Valley, Missouri is dedicated to Public safety; and

**WHEREAS**, the Grain Valley Police Department must investigate or identify vehicles which must be towed for reasons which may include arrests, traffic accidents, abandoned or hazardous vehicles or vehicles involved in a criminal investigation; and

**WHEREAS**, a Request for Proposals was distributed via media and press outlets, and the submissions were reviewed to determine the most qualified company; and

**WHEREAS**, the Grain Valley Police Department find that Ron's Auto & Truck Towing Company has satisfied and fulfilled all requirements of the proposal.

**NOW THEREFORE, BE IT RESOLVED** by the Board of Aldermen of the City of Grain Valley, Missouri as follows:

**SECTION 1:** The City Administrator is hereby authorized to enter into an Agreement for towing services with Ron's Auto & Truck Towing of Oak Grove, Missouri.

*PASSED and APPROVED, via voice vote, (-) this \_\_\_ Day of \_\_\_\_\_, 2017.*

---

Mike Todd  
Mayor

ATTEST:

---

Khalilah Holland  
Deputy City Clerk

INTENTIONALLY LEFT BLANK



**GRAIN VALLEY**

**POLICE**

711 Main St  
Grain Valley, MO 64029  
Phone 816.847.6250  
Fax 816.847.6259

---

January 9, 2017

TO: Mr. Ryan Hunt, City Administrator  
FROM: David Starbuck, Chief of Police  
SUBJECT: Request for Proposals – Towing Services

On November 7, 2016 a Request for Proposal for Towing Services in the City of Grain Valley was published. The prior contract with ABC Towing had expired. A total of three (3) bid packets were submitted by the due date of December 9<sup>th</sup>, from the following companies:

Ron's Auto and Truck Towing, Oak Grove, MO

Elite Tow Service, Lees Summit, MO

Jackson County Tow Service, Blue Springs, MO

A review of all three bid packets, and checks of their references were conducted by a three person committee within the Police Department. A scoring process and evaluation form was completed by each committee member, independently.

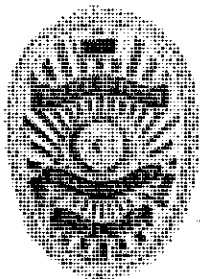
It is the recommendation of the review panel that the city award the new contract to Ron's Auto and Truck Towing, who fulfilled all requirements of the bid.

A handwritten signature in black ink, appearing to read "RD Starbuck".

David Starbuck  
Chief of Police

INTENTIONALLY LEFT BLANK





**GRAIN VALLEY**  
**POLICE**

711 Main St  
Grain Valley, MO 64029  
Phone 816.847.6250  
Fax 816.847.6259

---

January 11, 2017

TO: Mr. Ryan Hunt, City Administrator  
FROM: David Starbuck, Chief of Police  
SUBJECT: Request for Proposals – Towing Services

On November 7, 2016 a Request for Proposal for Towing Services in the City of Grain Valley was published. The prior contract with ABC Towing had expired. A total of three (3) bid packets were submitted by the due date of December 9<sup>th</sup>, from the following companies:

Ron's Auto and Truck Towing, Oak Grove, MO

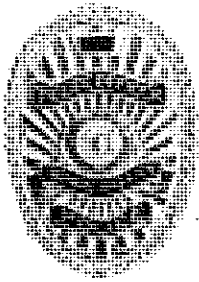
Elite Tow Service, Lees Summit, MO

Jackson County Tow Service, Blue Springs, MO

A review of all three bid packets and checks of their references were conducted by a three person committee within the Police Department. The review committee was composed of Chief David Starbuck, Captain Jeff Palecek and Sergeant Shannon Carr. A City of Grain Valley Evaluation form was completed by each committee member, independently. In addition, a check of references provided by the applicants was done to gather any information regarding the quality of services provided by each company.

Submitted Costs/charges of significant cost items provided included:

	<u>Ron's Towing</u>	<u>Elite Tow</u>	<u>Jackson County Tow</u>
Normal Tow Charge	50	75	50
Per Mile Charge	3.50	4.00	4.00
Storage Daily Fee	35	45	40
Release Charges	50	60	50



**GRAIN VALLEY**  
**POLICE**

711 Main St  
Grain Valley, MO 64029  
Phone 816.847.6250  
Fax 816.847.6259

---

Among the required minimum services in the RFP was that the contractor must have a minimum of two (2) 1-ton or larger trucks with minimum GVW of 10,000 pounds, and one (1) 2 ton truck with minimum GVW of 20,000 pounds. The following vehicle inventories were provided by the three applicants:

Ron's Towing Inventory:                   3 Flatbeds  
  3 Wreckers  
  2 Freightliner Trucks (1 heavy duty, 1 medium)  
  2 Bobcats  
  1 Large Skid Steer with tracks  
  1 Road Tractor  
  1 53-foot box trailer

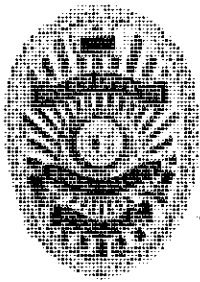
Jackson County Tow Inventory   5 Flatbeds  
  3 Wreckers  
  1 50-Ton Rotator  
  3 Tractor units  
  4 misc. trailers  
  1 Skid Steer  
  1 Bobcat Sweeper

Elite Tow Inventory                   2 Flatbed Tow trucks  
  1 Medium Duty Wrecker  
  1 Light Duty Wrecker

Other information noted during review of submissions

Jackson County Towing – each of the references provided by this company were noted to be private companies, and no law enforcement references were listed. A check with Blue Springs Police Department revealed that department has received numerous citizen complaints about Jackson County Towing, and the department has investigated several reports of price gouging, misrepresentation and property missing from towed vehicles. Blue Springs Police have (or plan to) terminate their contract with this company due to ongoing problems.

Elite Tow – while this company provides some services to the Missouri State Highway Patrol (satisfactorily per MSHP Sgt. Andy Coats), it was noted they have a limited amount of equipment and may not be able to handle each towing incident encountered. Their listed pricing was also higher in each category.



**GRAIN VALLEY**  
**POLICE**

711 Main St  
Grain Valley, MO 64029  
Phone 816.847.6250  
Fax 816.847.6259

---

Ron's Tow - This Company submitted the lowest overall pricing in their submission.

Five (5) law enforcement agencies were listed as professional references by this company. Three of the agencies were contacted and provides the following information:

Jackson County Sheriff's Office – Sheriff Mike Sharp and Col. Ben Kenney each highly recommended Ron's Tow, for the quality of service and reliability

Missouri State Highway Patrol – Sgt. Andy Coats reported Ron's provides satisfactory service and no known issues with reliability or integrity.

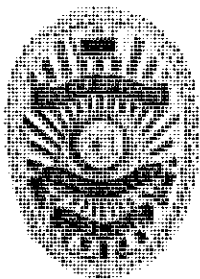
Lone Jack Police Department – Chief Bill Forbes reported their agency uses Ron's Tow almost exclusively. The service has been satisfactory. There was one allegation of missing currency from a towed vehicle that could not be verified, and the owner was responsive to being careful about the quality of drivers he hires.

It is the recommendation of the review panel that the city award the new contract to Ron's Auto and Truck Towing, as the most qualified to handle city towing services.

NOTE: During the January 9<sup>th</sup> Board of Aldermen meeting, questions were posed by Alderman Johnston and by Mr. Bill Pearce (owner of Kustom Cruzers Car Repair, 350 West Jefferson) about the proposed awarding of towing services to Ron's Tow. Of particular concern was that Ron's Tow would tow vehicles to their storage facility at 106 North Locust in Oak Grove, Missouri. Currently vehicles towed by Grain Valley Police (by ABC Towing, who did not submit a bid for the new contract), are taken to Kustom Cruzers for storage. It was pointed out that that in Section 4.D of the RFP it requires the company under contract to tow vehicles to a two lot located within a five (5) mile radius of the Grain Valley City Hall for storage. The storage lot of Ron's Tow has been determined to be 4.4 miles from City Hall, which complies with the requirements set out in the RFP.

On 1/10/2017 Chief Starbuck contacted Bill Pearce of Kustom Cruzers to verify current procedures and costs related to storage of vehicles towed to his lot by ABC Towing. He confirmed that the storage fee of \$35 daily (which was set in the previous city contract with ABC Towing), is split between the tow company and Kustom Cruzers. This would be the arrangement with any other towing company that chose to store cars at Kustom Cruzers.

On 1/10/2017 Chief Starbuck contacted Ron Harvey of Ron's Tow to clarify his plans for towing vehicles if awarded the city contract. He reported that he did not plan to use Kustom Cruzers for storage of towed vehicles, preferring to store them at his fenced facility in Oak Grove. He expressed concerns about the liability issues for



**GRAIN VALLEY**

**POLICE**

711 Main St  
Grain Valley, MO 64029  
Phone 816.847.6250  
Fax 816.847.6259

---

vehicles he left at another location, and was unsure about how that would affect his liability insurance coverage. He was advised of questions raised by the BOA on January 9<sup>th</sup>. He indicated he had already been in touch with Bill Pearce at Kustom Cruzers and would work out an arrangement if the city desired such.

On 1/11/2017 Chief Starbuck contacted both Bill Pearce and Ron Harvey to ascertain if they mutually agreed to any type of arrangement for storage of towed vehicles. Both indicated they had again discussed a working agreement in which vehicles towed by Ron's Tow would be stored at Kustom Cruzers. Mr. Harvey indicated he had been advised that Kustom Cruzers planned to install additional security cameras to the property. Both individuals were asked to contact Chief Starbuck if they reached any sort of agreement.

A handwritten signature in black ink that reads "D Starbuck".

David Starbuck  
Chief of Police



CITY OF GRAIN VALLEY

711 MAIN ST.
GRAIN VALLEY, MO 64029
816-847-6200 Phone
816-847-6209 Fax
www.cityofgrainvalley.org

TOWING SERVICES
REQUEST FOR PROPOSALS

The City of Grain Valley, Missouri, invites you to submit a proposal and statement of qualifications for Towing services for the period January 15, 2017 – January 15, 2019 with the option to renew annually, for up to two years, if agreed by both the City and the selected tow provider.

SEALED BIDS MUST BE RECEIVED BY:
2:00 P.M. on December 9, 2016

PLEASE MARK YOUR SUBMITTAL "SEALED PROPOSAL" AND SEND OR DELIVER IT TO:

City of Grain Valley
Attention: David Starbuck, Chief of Police
711 Main St.
Grain Valley, Missouri 64029

The City reserves the right to reject any and all proposals, to waive technical defects, to select the proposal(s) deemed most advantageous to the City, and to negotiate the fees and service delivery contemplated in this solicitation and in submitted proposals.

The undersigned certifies that he/she has the authority to bind this company in an agreement to supply the service or commodity in accordance with all terms and conditions specified herein. Please type or print the information below. Respondent is REQUIRED to complete, sign and return this form with their submittal.

Form with handwritten entries:
Company Name: Pons Auto & Truck Towing LLC
Authorized Person (Print): [Signature]
Address: 106 N. Locust Oak Grove 64025
City/State/Zip: [Handwritten]
Telephone #: 816-810-5151
Fax #: 816-697-9016
Date: 11-15-16
Tax ID #: 30-0599882
E-mail: Ponsautotrucktowing@yahoo.com
Entity Type: [Blank]



C. The term of this agreement is a two (2) year contract commencing on the date of the award. The City of Grain Valley reserves the right to renew the contract for up to two (2) additional one-year periods, provided both parties are in agreement.

**PRICING SCHEDULE  
CONTRACT AGREEMENT**

<u>Item</u>	<u>Charge</u>
A. <b>Normal Tow/ Recovery</b>	\$ <u>50</u>
Towing of automobiles, station wagons, vans, pick up trucks 3/4 ton and under, motorcycles, scooters, car trailers, boats on trailers, etc. (when all four wheels on ground, street or right of way that can be backed up to by tow vehicle and hooked up with minimal rotating of vehicles to be towed.)	
B. <b>Special Tow/ Recovery</b>	
Operations requiring the righting of vehicles, winching from off roadway, or special preparation due to extensive damage (such as tying shut doors, removal of broken glass and loose parts) before vehicle can be towed.	
1. Winching	Per Vehicle \$ <u>50</u>
2. Dollies Service	Per Call \$ <u>50</u>
C. <b>Large Vehicle Tow / Recovery</b>	
1. Towing of trucks and vehicles 1 ton and over	\$ <u>75</u>
D. <b>Per Mile Charge</b>	\$ <u>3.50</u>

No mileage charge shall be allowed for normal tows within the Area of Coverage. A mileage charge may be assessed for tows accomplished in accordance with the scope of this Agreement for service which commences or ends outside the Area of Coverage, except that portion of the service within the Area of Coverage shall not have mileage charges assessed.





E. **Storage Charges Per Day** \$ 35

Storage of vehicles described above shall have a per day rate assessed; beginning 24 hours following the time tow or recovery was performed, and re-assessed each day or portion thereof that the vehicle remains in secure storage area.

F. **Service Calls (Jump starts, tire changes, vehicle lockouts, etc.)**  
\$ 50

G. **Release Charges** \$ 50

No charges will be assessed for releasing vehicles during normal business hours for allowing owners/ insurance adjusters access to vehicles during normal business hours. A service trip fee may be charged for releasing vehicles outside normal business hours, on weekends, and holidays.

H. **Waiting Time** \$ 50

Waiting time charges will be allowed if required by the Police Department, and only if after arrival at the location a stand-by of more than 30 minutes before starting tow procedures occur. The tow ticket must be so annotated by the Police officer that in fact the Police Department required the tow to stand-by.

## 2 **TIMELINE FOR RFP PROCESS**

The timeline listed below is the City's estimation of time required to complete the RFQ process. All efforts shall be made to abide by this schedule but it may change due to different circumstances.

### TIMELINE:

Post RFP Notification	Week of November 7, 2016
Pre-Proposal Meeting	Upon Request
Receive Proposals	By December 9, 2016 by 2:00 PM
Meet to review	Week of December 12, 2016 City Administrator will review for approval December 19, 2016
Notice to Proceed	BOA Approval January 9, 2017



**EXPERIENCE & REFERENCES (limit to one page per client)**

Please provide a list of professional references below. List no more than five (5) references:

- o Name & Location:
- o Contract Dates (Actual or Estimated):
- o Contact Name, Title, Address, and Telephone Number:
  1. Jackson County Sheriffs Dept.
    1. Sheriff Mike Sharp
    2. Col. Benny Kenny
    3. Col. Hugh Mills
  2. Lone Jack PD
    1. Chief Bill Forbes
  3. Lake Lotawana PD
    1. Sgt. Thompson
  4. Lake Tapawanga PD
    1. Chief Jim Ross
  5. Missouri State Highway Patrol

**RON'S**  
**AUTO & TRUCK TOWING**

816-810-5151

LIGHT & HEAVY DUTY TOWING • JUMP START • UNLOCK

**FAMILY OWNED & OPERATED**

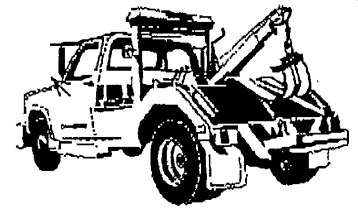
33811 E. 50 HWY. • LEE'S SUMMIT, MO 64086

*Over 40 years - Experience*





Ron's Auto & Truck Towing, LLC.  
33811 E Us Hwy 50  
Lees Summit, Mo 64086



- 1-2016 Dodge Flatbed
- 1-2015 Dodge Wrecker
- 2-2014 Dodge Flatbed
- 1-2013 Ford Wrecker
- 1-2011 Dodge Wrecker
- 1-2011 Ford Flatbed
- 1-1993 Freightliner (Medium Duty)
- 1- 1989 Freightliner (Heavy Duty)
- 2- Bobcats
- 1-Large Skid Steer with Tracks
- 1-Road Tractor
- 1-53 Ft Box Trailer

24 Hour access for all roll offs if needed

INTENTIONALLY LEFT BLANK

RON'S

EVALUATION CRITERIA

Evaluation Criteria	Maximum Points	Score
1 <b>Experience/Capabilities:</b> Evaluate the Respondent's ability to provide a high level of service, including credentials and experience in performing similar work for other municipalities, references, staff and equipment.	35	<u>34</u>
2. <b>Responsiveness:</b> Evaluate the Respondent's demonstrated commitment to customer service, ability to provide both required and optional services.	35	<u>33</u>
3. <b>Cost:</b> Consider cost of required and optional services.	30	<u>28</u>
Ranked By: <u>Sgt. Carr 2012</u>	TOTAL POINTS	<u>95</u>
	100	



Rons Tow

EVALUATION CRITERIA

Evaluation Criteria	Maximum Points	Score
1 <b>Experience/Capabilities:</b> Evaluate the Respondent's ability to provide a high level of service, including credentials and experience in performing similar work for other municipalities, references, staff and equipment.	35	<u>30</u>
2. <b>Responsiveness:</b> Evaluate the Respondent's demonstrated commitment to customer service, ability to provide both required and optional services.	35	<u>30</u>
3. <b>Cost:</b> Consider cost of required and optional services.	30	<u>30</u>
Ranked By: <u>Ralucca 205</u>	TOTAL POINTS	<u>90</u>
	100	



# Rovs Tow

## EVALUATION CRITERIA

	Evaluation Criteria	Maximum Points	Score
1	<b>Experience/Capabilities:</b> Evaluate the Respondent's ability to provide a high level of service, including credentials and experience in performing similar work for other municipalities, references, staff and equipment.	35	<u>30</u>
2	<b>Responsiveness:</b> Evaluate the Respondent's demonstrated commitment to customer service, ability to provide both required and optional services.	35	<u>30</u>
3	<b>Cost:</b> Consider cost of required and optional services.	30	<u>25</u>
	Ranked By: <u>Newark</u>	TOTAL POINTS	<u>85</u>
		100	

\* Excellent reference from Mayor Ben Kenney, Jackson Co. Sheriff



INTENTIONALLY LEFT BLANK

# *Ordinances*

INTENTIONALLY LEFT BLANK



**CITY OF GRAIN VALLEY  
BOARD OF ALDERMEN AGENDA ITEM**

<b>MEETING DATE</b>	01/23/2017	
<b>BILL NUMBER</b>	B17-01	
<b>AGENDA TITLE</b>	<b>AN ORDINANCE APPROVING THE FINAL PLAT OF OLD TOWNE MARKETPLACE 11<sup>th</sup> PLAT</b>	
<b>REQUESTING DEPARTMENT</b>	Community Development	
<b>PRESENTER</b>	Rick Arroyo, Community Development Director	
<b>FISCAL INFORMATION</b>	Cost as recommended:	Not Applicable
	Budget Line Item:	Not Applicable
	Balance Available	Not Applicable
	New Appropriation Required:	<input type="checkbox"/> Yes <input checked="" type="checkbox"/> No
<b>PURPOSE</b>	The purpose of this request is to gain final plat approval for Old Towne Marketplace 11 <sup>th</sup> Plat.	
<b>BACKGROUND</b>	The entire Old Towne Marketplace plat was approved at the preliminary plat level when the development was started. The developer has been doing the final plats when a building is going to be built. This process is similar to the one being used in the East Kansas City Industrial Park.	
<b>SPECIAL NOTES</b>	The building being planned for this lot is for Edward Jones Investments.	
<b>ANALYSIS</b>	This plat consists of just one lot. Access off of Garden Street will consist of a private drive that connects to the existing drive behind the State Farm and Red Cross Pharmacy buildings. This drive leads to another drive that allows for access onto Eagles Parkway. Access to Buckner – Tarsney can also be achieved by turning south on Garden and then turning east on Rock Creek Lane. Overall, the site layout will fit with the State Farm and Red Cross Pharmacy site designs.	
<b>PUBLIC INFORMATION PROCESS</b>	Not Applicable	

<b>BOARD OR COMMISSION RECOMMENDATION</b>	Planning & Zoning Commission recommended approval
<b>DEPARTMENT RECOMMENDATION</b>	Staff Recommends Approval
<b>REFERENCE DOCUMENTS ATTACHED</b>	Ordinance, Plat, Aerial & Site Layout

**CITY OF  
GRAIN VALLEY**

**STATE OF  
MISSOURI**

BILL NO. B17-01

ORDINANCE NO. \_\_\_\_\_  
SECOND READING \_\_\_\_\_  
FIRST READING \_\_\_\_\_

INTRODUCED BY:  
*ALDERMAN ARNOLD*

**AN ORDINANCE APPROVING THE FINAL PLAT OF OLD TOWNE  
MARKETPLACE 11<sup>th</sup> PLAT**

**WHEREAS**, the Mayor and the Board of Aldermen are committed to the development of the City; and

**WHEREAS**, a meeting was held on January 18, 2017 in which the Planning and Zoning Commission recommended that the Board of Aldermen approve the final plat; and

**WHEREAS**, the Board of Aldermen of the City of Grain Valley, Missouri, has determined that it is desirable; and

**WHEREAS**, the approved plat shall be recorded at the Jackson County Recorder of Deeds office.

**NOW THEREFORE, BE IT ORDAINED** by the Board of Aldermen of the City of Grain Valley, Missouri as follows:

**SECTION 1:** The property legally described below as Old Towne Marketplace – 11<sup>th</sup> Plat, is hereby accepted as a final plat.

PROPERTY DESCRIPTION

A TRACT OF LAND LOCATED IN THE SOUTHWEST QUARTER OF SECTION 35 AND IN THE SOUTHEAST QUARTER OF SECTION 34 ALL IN TOWNSHIP 49, RANGE 30, GRAIN VALLEY, JACKSON COUNTY, MISSOURI DESCRIBED AS FOLLOWS:

BEGINNING AT THE SOUTHWEST CORNER OF LOT 1, OLD TOWNE MARKETPLACE, 9TH PLAT, A SUBDIVISION IN GRAIN VALLEY, JACKSON COUNTY, MISSOURI; THENCE NORTH 88 DEGREES 09 MINUTES 09 SECONDS WEST ALONG THE EXTENSION OF THE SOUTH LINE OF SAID LOT 1, 171.78 FEET TO A POINT ON THE EAST RIGHT OF WAY LINE OF GARDEN STREET AS NOW ESTABLISHED BY RECORDED PLAT OF OLD TOWNE MARKETPLACE, 4TH PLAT IN SAID CITY, COUNTY AND STATE; THENCE NORTH 01 DEGREES 43 MINUTES 21 SECONDS EAST ALONG SAID EAST RIGHT OF WAY LINE, 209.26 FEET TO A POINT ON THE SOUTH RIGHT OF WAY LINE OF EAGLES PARKWAY (FORMERLY MISSOURI STATE ROUTE AA); THENCE SOUTH 88 DEGREES 11 MINUTES 49 SECONDS EAST ALONG SAID RIGHT OF WAY LINE, 114.94 FEET; THENCE SOUTH 88 DEGREES 22 MINUTES 07 SECONDS EAST ALONG SAID RIGHT OF WAY LINE, 57.30 FEET TO THE NORTHWEST CORNER OF SAID "OLD TOWNE MARKETPLACE, 9TH PLAT"; THENCE SOUTH 01 DEGREES 50 MINUTES 51 SECONDS WEST ALONG THE WEST LINE OF SAID "OLD TOWNE MARKETPLACE, 9TH PLAT", 209.57 FEET TO THE POINT OF BEGINNING. CONTAINING 0.83 ACRES, MORE OR LESS. BASIS OF BEARINGS TAKEN FROM "OLD TOWNE MARKETPLACE, 9TH PLAT".

[B17-01]

Read two times and PASSED by the Board of Aldermen this \_\_\_\_ day of \_\_\_\_\_, 2017,  
the aye and nay votes being recorded as follows:

ALDERMAN ARNOLD \_\_\_\_\_  
ALDERMAN HEADLEY \_\_\_\_\_  
ALDERMAN PALECEK \_\_\_\_\_

ALDERMAN COLEMAN \_\_\_\_\_  
ALDERMAN JOHNSTON \_\_\_\_\_  
ALDERMAN WEST \_\_\_\_\_

MAYOR \_\_\_\_\_  
*(in the event of a tie only)*

Approved as to form:

\_\_\_\_\_  
James Cook  
City Attorney

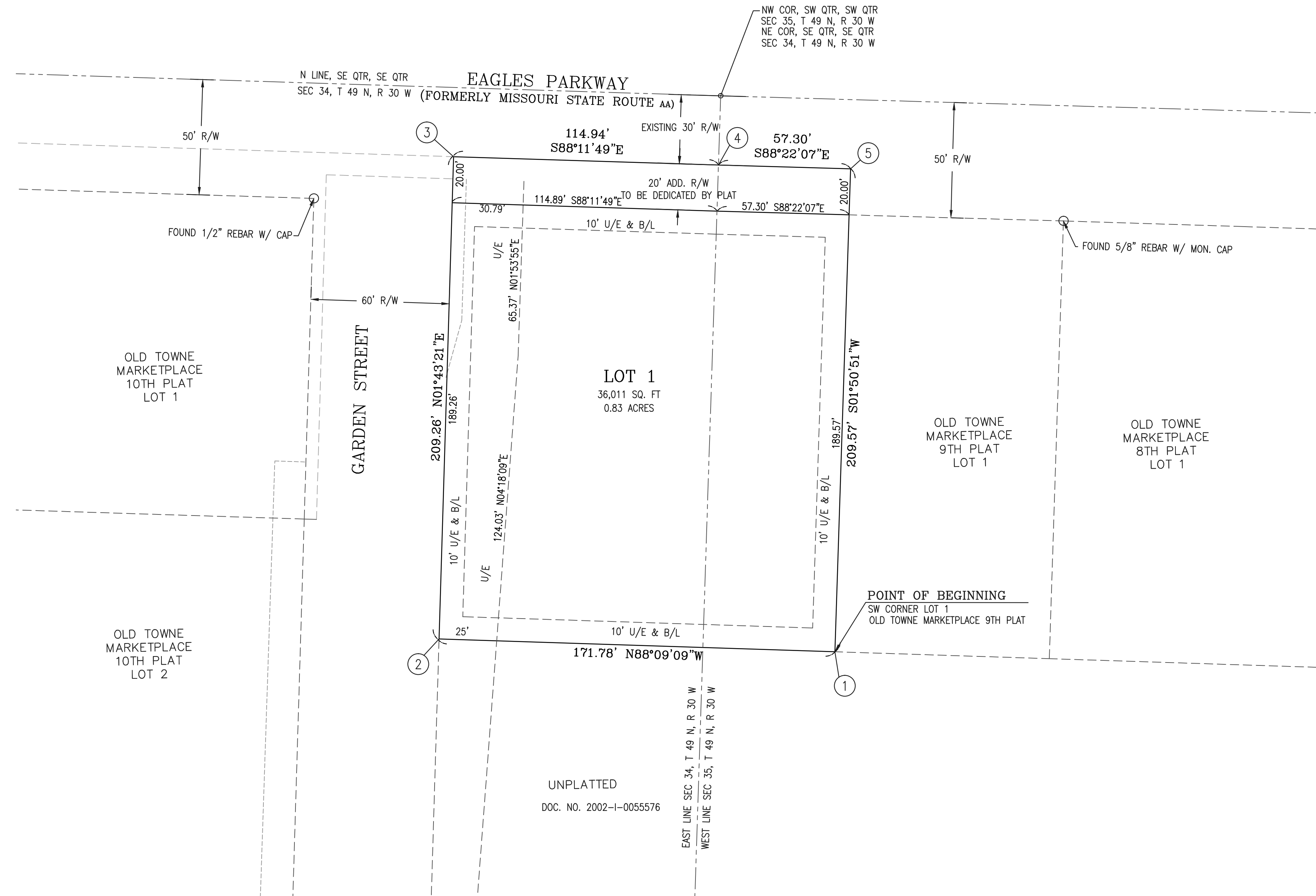
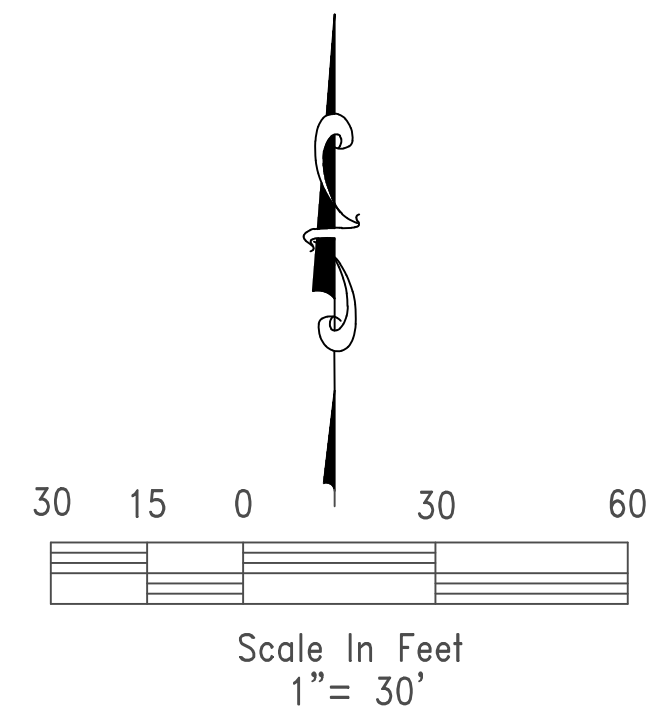
\_\_\_\_\_  
Mike Todd  
Mayor

ATTEST:

\_\_\_\_\_  
Khalilah Holland  
Deputy City Clerk

**FINAL PLAT**  
**OLD TOWNE MARKETPLACE**  
**11TH PLAT**

A PART OF THE SW 1/4 OF SECTION 35  
 AND SE 1/4 SECTION 34, TOWNSHIP 49, RANGE 30,  
 GRAIN VALLEY, JACKSON COUNTY, MISSOURI



**PLAT DEDICATION:**  
 THE UNDERSIGNED PROPRIETORS OF THE ABOVE DESCRIBED TRACT OF LAND HAS CAUSED THE SAME TO BE SUBDIVIDED IN THE MANNER SHOWN ON THE ACCOMPANYING PLAT, WHICH SUBDIVISION SHALL BE HEREAFTER KNOWN AS "OLD TOWNE MARKETPLACE - 11TH PLAT".

**BUILDING LINES:**  
 BUILDING LINES OR SETBACK LINES WILL BE ESTABLISHED BY THE DEVELOPMENT PLAN AND NO BUILDING OR PORTION THEREOF SHALL BE BUILT BETWEEN THIS LINE AND THE LOT LINE NEAREST THERETO.

**EASEMENT DEDICATION:**  
 AN EASEMENT IS HEREBY GRANTED TO THE CITY OF GRAIN VALLEY, MISSOURI, FOR THE PURPOSE OF LOCATING, CONSTRUCTING, OPERATING, AND MAINTAINING FACILITIES FOR WATER, GAS, ELECTRICITY, SEWAGE, TELEPHONE, CABLE TV AND SURFACE DRAINAGE, INCLUDING, BUT NOT LIMITED TO, UNDERGROUND PIPES AND CONDUITS, PAD MOUNTED TRANSFORMERS, SERVICES PEDESTALS, ANY OR ALL OF THEM UPON, OVER, UNDER AND ALONG THE STRIPS OF LAND DESIGNATED UTILITY EASEMENTS (U/E), PROVIDED THAT THE EASEMENT GRANTED HEREIN IS SUBJECT TO ANY AND ALL EXISTING EASEMENTS. ANY UTILITIES LOCATED WITHIN THE DESIGNATED UTILITY EASEMENTS, BY VIRTUE OF THEIR EXISTENCE, DO HEREBY COVENANT, CONSENT, AND AGREE THAT THEY SHALL BE SUBORDINATE TO SAID PUBLIC RIGHT OF WAY IN THE EVENT THAT ADDITIONAL PUBLIC RIGHT OF WAY IS DEDICATED OVER THE LOCATION OF THE UTILITY EASEMENT. WHERE OTHER EASEMENTS ARE DESIGNATED FOR A PARTICULAR PURPOSE, THE USE THEREOF SHALL BE LIMITED TO THAT PURPOSE ONLY. ALL OF THE ABOVE EASEMENTS SHALL BE KEPT FREE FROM ANY AND ALL OBSTRUCTIONS WHICH WOULD INTERFERE WITH THE CONSTRUCTION OR RECONSTRUCTION AND PROPER, SAFE AND CONTINUOUS MAINTENANCE OF THE AFORESAID USES AND SPECIFICALLY THERE SHALL NOT BE BUILT THEREON OR THEREOVER ANY STRUCTURE (EXCEPT DRIVEWAYS, PAVED AREAS, GRASS, SHRUBS AND FENCES) NOR SHALL THERE BE ANY OBSTRUCTION TO INTERFERE WITH THE AGENTS AND EMPLOYEES OF GRAIN VALLEY, MISSOURI, AND ITS FRANCHISED UTILITIES FROM GOING UPON SAID EASEMENT AND AS MUCH OF THE ADJOINING LANDS AS MAY BE REASONABLY NECESSARY IN EXERCISING THE RIGHTS GRANTED BY THE EASEMENT. NO EXCAVATION OF FILL SHALL BE MADE OR OPERATION OF ANY KIND OR NATURE SHALL BE PERFORMED WHICH WILL REDUCE OR INCREASE THE EARTH COVERAGE OVER THE UTILITIES ABOVE STATED OR THE APPURTENANCES THERETO WITHOUT A VALID PERMIT FROM THE DEPARTMENT OF PUBLIC WORKS AS TO UTILITY EASEMENTS.

**STREET DEDICATION:**  
 STREETS SHOWN HEREON AND NOT HERETOFORE DEDICATED FOR PUBLIC USE AS STREET RIGHT-OF-WAY ARE HEREBY DEDICATED.

**LEGAL DESCRIPTION:**  
 A TRACT OF LAND LOCATED IN THE SOUTHWEST QUARTER OF SECTION 35 AND IN THE SOUTHEAST QUARTER OF SECTION 34 ALL IN TOWNSHIP 49, RANGE 30, GRAIN VALLEY, JACKSON COUNTY, MISSOURI DESCRIBED AS FOLLOWS:  
 BEGINNING AT THE SOUTHWEST CORNER OF LOT 1, OLD TOWNE MARKETPLACE, 9TH PLAT, A SUBDIVISION IN GRAIN VALLEY, JACKSON COUNTY, MISSOURI; THENCE NORTH 88 DEGREES 09 MINUTES 09 SECONDS WEST ALONG THE EXTENSION OF THE SOUTH LINE OF SAID LOT 1, 171.78 FEET TO A POINT ON THE EAST RIGHT OF WAY LINE OF GARDEN STREET AS NOW ESTABLISHED BY RECORDED PLAT OF OLD TOWNE MARKETPLACE, 4TH PLAT IN SAID CITY, COUNTY AND STATE; THENCE NORTH 01 DEGREES 43 MINUTES 21 SECONDS EAST ALONG SAID EAST RIGHT OF WAY LINE, 209.26 FEET TO A POINT ON THE SOUTH RIGHT OF WAY LINE OF EAGLES PARKWAY (FORMERLY MISSOURI STATE ROUTE AA); THENCE SOUTH 88 DEGREES 11 MINUTES 49 SECONDS EAST ALONG SAID RIGHT OF WAY LINE, 114.94 FEET; THENCE SOUTH 88 DEGREES 22 MINUTES 07 SECONDS EAST ALONG SAID RIGHT OF WAY LINE, 57.30 FEET TO THE NORTHWEST CORNER OF SAID "OLD TOWNE MARKETPLACE, 9TH PLAT"; THENCE SOUTH 01 DEGREES 50 MINUTES 51 SECONDS WEST ALONG THE WEST LINE OF SAID "OLD TOWNE MARKETPLACE, 9TH PLAT", 209.57 FEET TO THE POINT OF BEGINNING. CONTAINING 0.83 ACRES, MORE OR LESS. BASIS OF BEARINGS TAKEN FROM "OLD TOWNE MARKETPLACE, 9TH PLAT".

**ACKNOWLEDGEMENT:**

IN WITNESS WHEREOF, OLD TOWNE MARKETPLACE, LLC, A MISSOURI LIMITED LIABILITY COMPANY HAS CAUSED THESE PRESENTS TO BE SIGNED BY ITS MEMBER THIS \_\_\_\_ DAY OF \_\_\_\_\_, 20\_\_.

MEMBER - DAVID L. WARD

STATE OF \_\_\_\_\_ )  
 COUNTY OF \_\_\_\_\_ )SS

ON THIS \_\_\_\_ DAY OF \_\_\_\_\_, 20\_\_, BEFORE ME APPEARED DAVID L. WARD, MEMBER OF OLD TOWNE MARKETPLACE, LLC, A MISSOURI LIMITED LIABILITY COMPANY TO ME KNOWN TO BE THE PERSON DESCRIBED IN AND WHO EXECUTED THE FOREGOING INSTRUMENT; AND ACKNOWLEDGED THAT HE EXECUTED THE SAME AS HIS FREE ACT AND DEED.

IN TESTIMONY WHEREOF, I HAVE HEREUNTO SET MY HAND AND AFFIXED MY OFFICIAL SEAL AT MY OFFICE IN \_\_\_\_\_, THE DAY AND YEAR LAST ABOVE WRITTEN.

SEAL

NOTARY PUBLIC IN AND FOR SAID COUNTY AND STATE

MY TERM EXPIRES \_\_\_\_\_

**CITY ACKNOWLEDGEMENT:**

THIS IS TO CERTIFY THAT THE WITHIN PLAT OF "OLD TOWNE MARKET PLACE - 11TH PLAT", WAS SUBMITTED TO AND APPROVED BY THE GRAIN VALLEY PLANNING AND ZONING COMMISSION THIS \_\_\_\_ DAY OF \_\_\_\_\_, 201\_\_.

CHAIRMAN - DEBBIE SAFFELL

SECRETARY - KEVIN BROWNING

THESE EASEMENTS AND RIGHT OF WAY ACCEPTED BY THE GOVERNING BODY OF GRAIN VALLEY, MISSOURI THIS \_\_\_\_ DAY OF \_\_\_\_\_, 20\_\_.

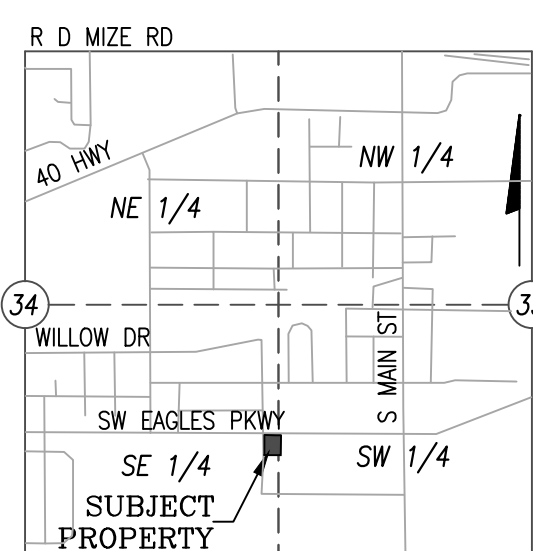
MAYOR - MIKE TODD

DEPUTY CITY CLERK - KHALILAH HOLLAND

**JACKSON COUNTY ASSESSOR APPROVAL:**

BY: \_\_\_\_\_

DATE: \_\_\_\_\_



LOCATION MAP  
 SCALE=1"=2000'  
 SECTIONS 34 AND 35  
 TOWNSHIP 49 RANGE 30

**LEGEND**

- U/E - UTILITY EASEMENT
- D/E - DRAINAGE EASEMENT
- W/E - WATER EASEMENT
- S/E - SEWER EASEMENT
- B/L - BUILDING LINE
- C/L - CENTERLINE
- R/W - RIGHT OF WAY

**MONUMENT LEGEND**

SET 1/2" REBAR AND CAP  
 @ ALL REAR LOT CORNERS  
 RLS-2134, MO.  
 RLS-1069, KS.

CURB NOTCHES ARE ON AN  
 EXTENSION OF THE SIDE LOT  
 LINES.

MONUMENTATION WILL BE COMPLETED  
 WITHIN 6 MONTHS AFTER COMPLETION  
 OF ALL STREETS AND UTILITIES.

**STATE PLANE COORDINATES**

- ① 317707.4700  
874572.2450
- ② 317705.8800  
874623.0870
- ③ 317700.1055  
874807.6897
- ④ 317648.3188  
874806.0698
- ⑤ 317648.4141  
874803.0233

1 METER = 3.28083333'  
 KC METRO CONTROL STATION JA-11 RESET WAS USED TO CREATE  
 THE COORDINATES AS SHOWN # AND IS BASED ON "MISSOURI  
 COORDINATE SYSTEM OF 1983, WEST ZONE" USING A COMBINED  
 GRID FACTOR OF 0.9999089.

**NOTES:**

- 1. THE SUBJECT PROPERTY CONTAINS 0.83 ACRES MORE OR LESS.

I HEREBY CERTIFY THAT THE PLAT OF "OLD TOWNE MARKETPLACE - 11TH PLAT" SUBDIVISION IS BASED ON AN ACTUAL SURVEY MADE BY ME OR UNDER MY DIRECT SUPERVISION AND THAT SAID SURVEY MEETS OR EXCEEDS THE CURRENT MINIMUM STANDARDS FOR PROPERTY BOUNDARY SURVEYS AS ESTABLISHED BY THE DEPARTMENT OF NATURAL RESOURCES, DIVISION OF GEOLOGY AND LAND SURVEY OF THE STATE OF MISSOURI, AND MISSOURI STANDARDS FOR PROPERTY BOUNDARY SURVEYS, ESTABLISHED BY THE MISSOURI BOARD FOR ARCHITECTS, PROFESSIONAL ENGINEERS AND LAND SURVEYORS. I FURTHER CERTIFY THAT I HAVE COMPLIED WITH ALL STATUTES, ORDINANCES, AND REGULATIONS GOVERNING THE PRACTICE OF SURVEYING AND PLATTING OF SUBDIVISIONS TO THE BEST OF MY BELIEF.

SURVEYOR: ROGER A. BACKUES, PLS MO. NO. 2134

OLD TOWNE MARKETPLACE- 11TH PLAT LOT 1 GRAIN VALLEY, JACKSON COUNTY, MISSOURI	
DATE: NOVEMBER 29, 2016	
DEVELOPER BLUE SPRINGS SAFETY STORAGE LLC 1120 NW EAGLE RIDGE BLVD GRAIN VALLEY, MISSOURI 64029 PH. 816.229.8115	
BOUNDARY & CONSTRUCTION SURVEYING, INC. 821 NE COLUMBUS STREET SUITE 100, LEE'S SUMMIT, MO. 64063 PH.# 816/554-9798, FAX # 816/554-0337	
PROJECT NO. 16-263	SHEET 1 OF 1
OLD TOWNE MARKETPLACE- 11TH PLAT, GRAIN VALLEY, MO	

INTENTIONALLY LEFT BLANK





GARDEN

EAGLES

GARDEN

100 B  
100 A

101 B  
101 A

126

124

122

120

401

301

203

203 B

203 A

203 C

0

N

1 inch = 60 feet

0 30 60 Feet

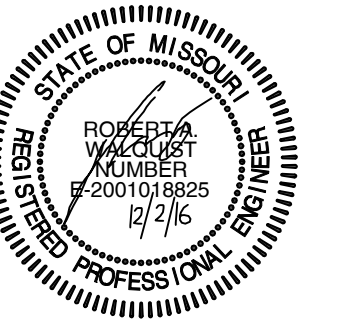


INTENTIONALLY LEFT BLANK



# FINAL SITE PLAN FOR EDWARD JONES BUILDING ON LOT 1 OF "OLD TOWNE MARKETPLACE 11TH PLAT" GRAIN VALLEY, JACKSON COUNTY, MISSOURI SE 1/4, SEC 34, TWP. 49, RGE. 30W

**DEVELOPER:**  
BLUE SPRING SAFETY STORAGE LLC  
1120 NW EAGLE RIDGE BLVD.  
GRAIN VALLEY, MISSOURI 64039  
Ph.# 816-229-8115

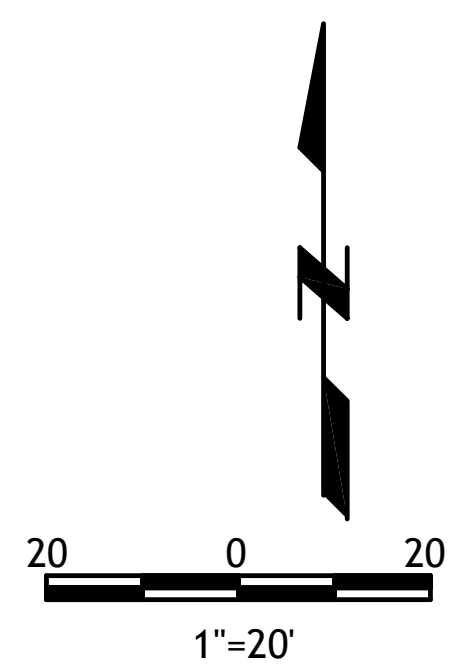
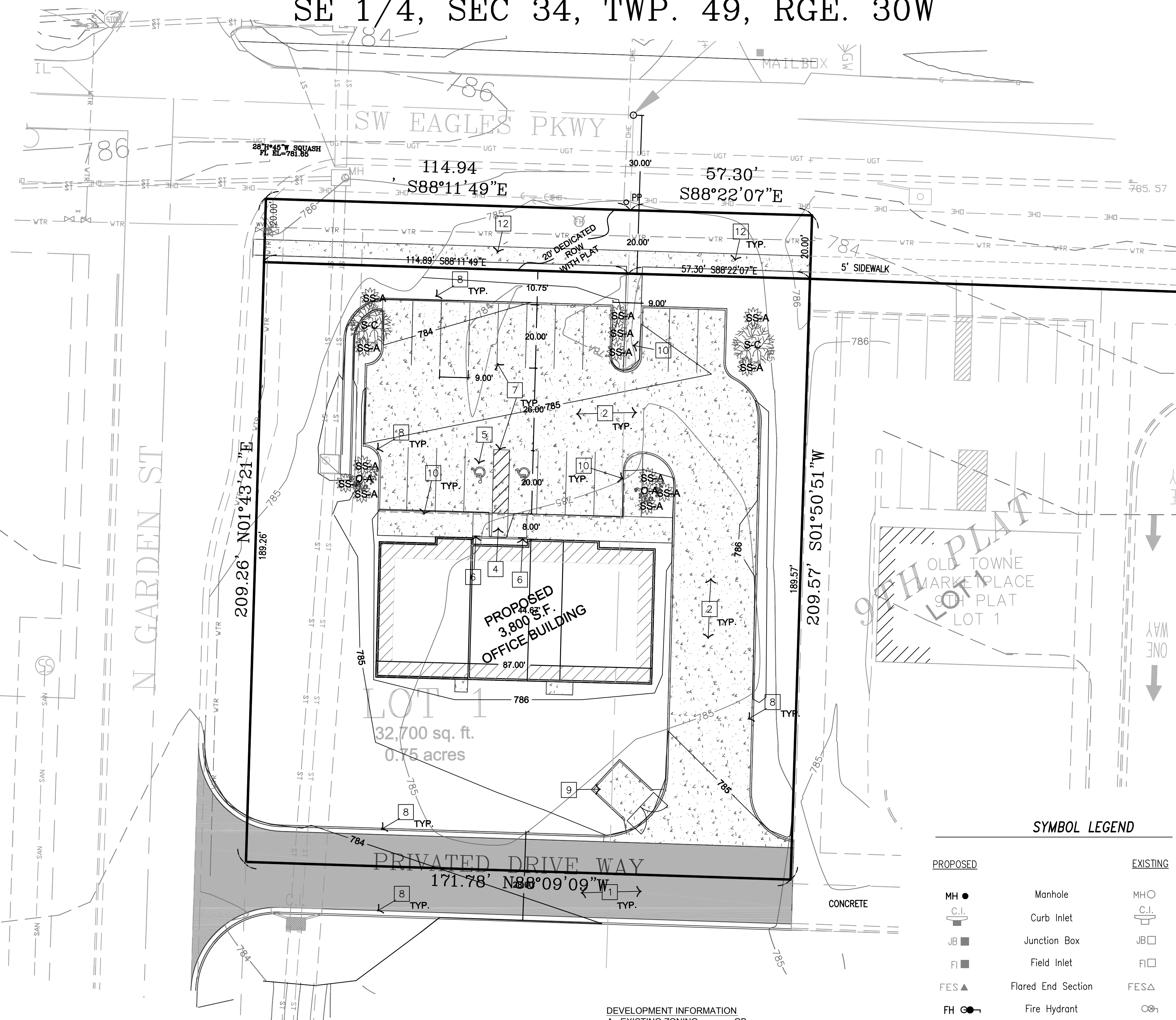


- PLAN NOTES:**
- 1 HEAVY ASPHALT PAVEMENT RE: SEE SHEET C210
  - 2 HEAVY CONCRETE PAVEMENT RE: SEE SHEET C210
  - 3 4" THICK x 5'-0" WIDE CONC. WALK. PROVIDE EQ. SPACED CONTROL JOINTS @ 5'-0" O.C. BETWEEN EXPANSION JOINTS (E.J.). PROVIDE E.J.'S EVERY 50'-0" MAX., UNLESS DIMENSIONED OTHERWISE.
  - 4 ACCESSIBILITY RAMP RE: SEE SHEET C210
  - 5 PAINT ACCESSIBLE PARKING SYMBOLS ACCORDING TO APWA PAVEMENT MARKING STANDARDS. RE: SEE SHEET C210
  - 6 INSTALL ACCESSIBLE PARKING SIGN "TYPE B" RE: SEE SHEET C210
  - 7 STRIPE PAVING WITH 4" WIDE STRIPE & PAINT ACCORDING TO APWA PAVEMENT MARKING STANDARDS.
  - 8 CG-1 CURB (WET & DRY) RE: SEE SHEET C210
  - 9 TRASH ENCLOSURE RE: SEE SHEET C210
  - 10 CURB WALK RE: SEE SHEET C210
  - 11 SITE MONUMENT SIGN RE: SEE ARCHITECTURAL PLANS
  - 12 5' CITY SIDEWALK RE: SEE CITY DETAILS
  - 13 CONCRETE FLUME RE: SEE SHEET C210

**LEGAL DESCRIPTION:**  
A TRACT OF LAND LOCATED IN THE SOUTHWEST QUARTER OF SECTION 35 AND IN THE SOUTHEAST QUARTER OF SECTION 34 ALL IN TOWNSHIP 49, RANGE 30, GRAIN VALLEY, JACKSON COUNTY, MISSOURI DESCRIBED AS FOLLOWS:  
BEGINNING AT THE SOUTHWEST CORNER OF LOT 1, OLD TOWNE MARKETPLACE, 9TH PLAT, A SUBDIVISION IN GRAIN VALLEY, JACKSON COUNTY, MISSOURI; THENCE NORTH 88 DEGREES 09 MINUTES 09 SECONDS WEST ALONG THE EXTENSION OF THE SOUTH LINE OF SAID LOT 1, 171.78 FEET TO A POINT ON THE EAST RIGHT OF WAY LINE OF GARDEN STREET AS NOW ESTABLISHED BY RECORDED PLAT OF OLD TOWNE MARKETPLACE, 4TH PLAT IN SAID CITY, COUNTY AND STATE; THENCE NORTH 01 DEGREES 43 MINUTES 21 SECONDS EAST ALONG SAID EAST RIGHT OF WAY LINE, 209.26 FEET TO A POINT ON THE SOUTH RIGHT OF WAY LINE OF EAGLES PARKWAY (FORMERLY MISSOURI STATE ROUTE AA); THENCE SOUTH 88 DEGREES 11 MINUTES 49 SECONDS EAST ALONG SAID RIGHT OF WAY LINE, 114.94 FEET; THENCE SOUTH 88 DEGREES 22 MINUTES 07 SECONDS EAST ALONG SAID RIGHT OF WAY LINE, 57.30 FEET TO THE NORTHWEST CORNER OF SAID "OLD TOWNE MARKETPLACE, 9TH PLAT"; THENCE SOUTH 01 DEGREES 50 MINUTES 51 SECONDS WEST ALONG THE WEST LINE OF SAID "OLD TOWNE MARKETPLACE, 9TH PLAT", 209.57 FEET TO THE POINT OF BEGINNING. CONTAINING 0.83 ACRES, MORE OR LESS. BASIS OF BEARINGS TAKEN FROM "OLD TOWNE MARKETPLACE, 9TH PLAT".

**PROSED LEGAL DESCRIPTION:**  
LOT 1 OF "OLD TOWNE MARKETPLACE 11TH PLAT"

**FLOODPLAIN NOTE**  
ENTIRE SITE LIES OUTSIDE OF FLOOD PLAIN



SYMBOL LEGEND		LINE LEGEND	
PROPOSED	EXISTING	PROPOSED	EXISTING
MH ●	Manhole	MH ○	Storm Line
C.I.	Curb Inlet	C.I.	Sanitary Line
JB ■	Junction Box	JB □	Water Line
FI ■	Field Inlet	FI □	Building Line
FES ▲	Flored End Section	FES ▲	Easement Line
FH ●	Fire Hydrant	FES ▲	4' Sidewalk
BO ●	Blow Off	=====	2' Curb
WV ●	Water Valve	~ ~ ~ ~ ~	Contour
WM ●	Water Meter	~~~~~	Tree Line
	Straddle	-----	Fence Line
	Utility Pole	-----	Gas Line
	Guy Wire	-----	Overhead Telephone Line
	Electric Transformer	-----	Underground Telephone Line
	Telephone Pedestal	-----	Overhead Electrical Line
	Cable Pedestal	-----	Underground Electrical Line
CO	Clean Out		

**DEVELOPMENT INFORMATION**

A. EXISTING ZONING =	GB
B. TOTAL LAND AREA	0.75ac = 32,700sf
C. PROPOSED USE =	OFFICE/
D. EXISTING BUILDING	N/A
E. HEIGHT OF PROPOSED BUILDING	25' (1 STORY)
F. GROSS FLOOR AREA	3,800 S.F.
G. COVERAGE/ IMPERVIOUS AREA	
EXISTING IMPERVIOUS AREA	0 sf
PROPOSED TOTAL BUILDING AND PARKING	18,686sf
PERCENT COVERAGE	57%
H. PARKING	
OFFICE	5 PER 1,000SF =
REQUIRED	19
PROVIDED	19
I. ACCESSIBLE STALLS	
REQUIRED	2
PROVIDED	2

**PLANTING SCHEDULE**

S-C	COMMON NAME	SCIENTIFIC NAME	CALIPER	PLANT UNITS PER	TOTAL PROPOSED UNITS
2	AUTUMN BLAZE MAPLE	ACER X 'AUTUMN BLAZE'	2" CAL.	-	-
2	ROYAL RAINDROPS CRABAPPLE	MALUS 'ROYAL RAINDROPS'	1.5" CAL.	-	-
13	BOX WOOD	BUXUS SEMPERVERENS	3GAL	-	-

TOTAL PROPOSED = -  
TOTAL REQUIRED = -

**CONSULTANTS:**  
M.E.P.:

**CIVIL:**  
**Quist Engineering, Inc**  
Civil Engineering for Residential  
Commercial Site Development  
821 NE Columbus St.  
Lee's Summit, Missouri 64063  
Phone: (816) 550-5675

**PROJECT**  
EDWARD JONES BUILDING  
**CONSTRUCTION OF:**  
EDWARD JONES BUILDING  
ON  
LOT 1 OF  
"OLD TOWN MARKET PLACE 10TH PLAT"  
GRAIN VALLEY MO  
JACKSON COUNTY

**DATE:** 12-02-2016  
**REVISION DATE:**

**DESIGN/ DRAWN:**

**APPROVED:**

**SHEET TITLE:**  
FINAL SITE PLAN

**SHEET NUMBER:**

C200

FINAL SITE PLAN

**PROJECT NO:** E16-318



INTENTIONALLY LEFT BLANK